

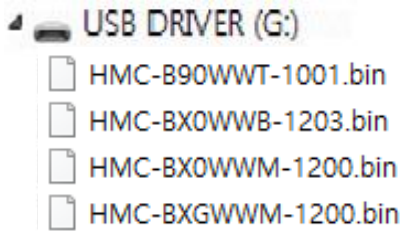
F/W Upgrade Guide

SAMSUNG

Samsung Electronics

Step1. How to prepare the USB Memory Drive

1. Download the firmware file from Samsung.com into your computer
2. Unzip the downloaded files.
3. Connect an USB Memory Drive to an USB port of your PC.
Copy the unzipped file to the USB Memory Drive.
4. Confirm that the file has been added to the top folder of the USB memory drive




5. Safely disconnect the USB memory drive by clicking in '**Safely Remove**' in Task Bar.

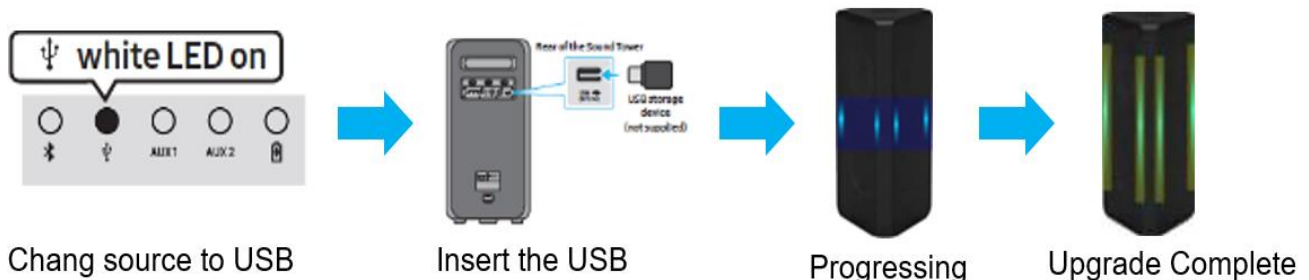
[Caution]

Please do not re-name any of update files.

We do not guarantee any defects caused by renaming the software file.

Step2. How to upgrade the Firmware by USB

1. Turn on the unit and insert the USB drive into the USB port on the rear of the unit.
2. Press the source button() on the top panel or remote to select USB mode.
The update will start automatically in less than one minute.
※ If the firmware version applied on the unit is lower or the same, it will not be updated.
3. It proceeds 3 times in the order of “ UPDATE → Progress → Reboot “
so It would take around 10 minutes.
※ Cycle and duration of update may differ by version



[Important]

1. Please **DO NOT** turn off the power or remove the USB while the update.
 2. If the unit freezes while the update, press and hold the power button on the top panel for 15 seconds and then wait at least 3 minutes.
- ※ We recommend initialize the unit after update firmware is completed.
. Turn on the unit and press and hold "VOL +" & "VOL -" button on the top panel for 5sec.