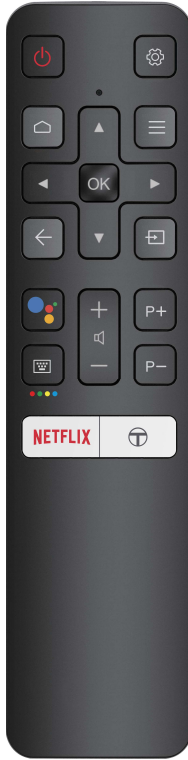


User's Manual for Exclusive Remote Control RC802V



Remote Control Functions

	Standby / quit standby.
	To display the Settings menu.
	To access the Smart TV homepage.
	To display the Option menu.
	Navigation direction buttons. The ▲/▼ buttons are also used to change channels in TV mode.
	To confirm an entry or selection. This button is also used to display the channel list in TV mode.
	To return to the previous menu or quit an app.
	To select input source.
	Press to activate and use Google Assistant. <i>(Available only when the network connection works normally.)</i>
	To pop up the virtual remote control keyboard when available.
	To control the volume.
	To change channels.
	To access Netflix. <i>(Not available for some models.)</i>
	To access T recommended apps.

Google is a trademark of Google LLC.

How to use the remote control

When using button for the first time, you will be prompted to pair the remote with the TV. Please follow the on-screen guide for pairing instructions.

- Keep the remote control and TV in 1 meter, press OK and button on the remote at the same time. You can use after activating successfully.
- This voice search function is only available for content search from certain apps.
- Set language in the **settings** menu to your local language or official language to enhance voice search successfully.
- When the voice search does not work, check if your remote control has been successfully paired with your TV, if the language setting is correct, if Google server is available and stable.

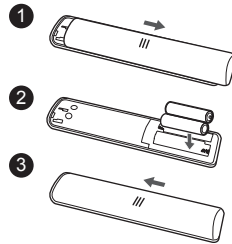
Installing Batteries

- Push to open the back cover as illustrated.
- Insert two AAA batteries according to the polarities marked on the battery case.
- Replace the back cover as illustrated.

Warning

Batteries (battery pack or batteries installed) shall not be exposed to excessive heat such as sunshine, fire or the like.

For the purpose of performance improvement, design and specifications are subject to change without notice.



Specifications

Remote control size	154.6mm x 37.9mm x 16.4mm	Battery type	Zn/MnO2 1000mAh
Operating environment temperature	-25~40 °C	Voice search current	<15mA
Weight	0.05kg	Other button current	<10mA
Communication methods	RF2.4G Adaptive frequency hopping	Sleep current	<5μA <i>(automatically enter sleep mode after Bluetooth disconnected)</i>
RF Operating distance	>15m	MIC	Built-in microphone
IR Operating distance	>10m	Keyboard	Handheld keyboard