





AX6600 Tri-Band Wi-Fi 6 Router

PURE GAMING
PURE IMMERSION




Archer GX90

 6.6 Gbps Warp
Speeds

 2.5 Gbps
Ethernet Port

 Game Accelerator

 3-4 Bedroom House
Coverage

Highlights

Wi-Fi 6^E Faster. Broader. Unstoppable.

Higher speeds create less congestion for gaming rigs. Archer GX90 provides tri-band Wi-Fi 6 for outstanding online gaming experiences. One dedicated Gaming Band with HT160 offers 4.8 Gbps of bandwidth—more than enough for your gaming needs.



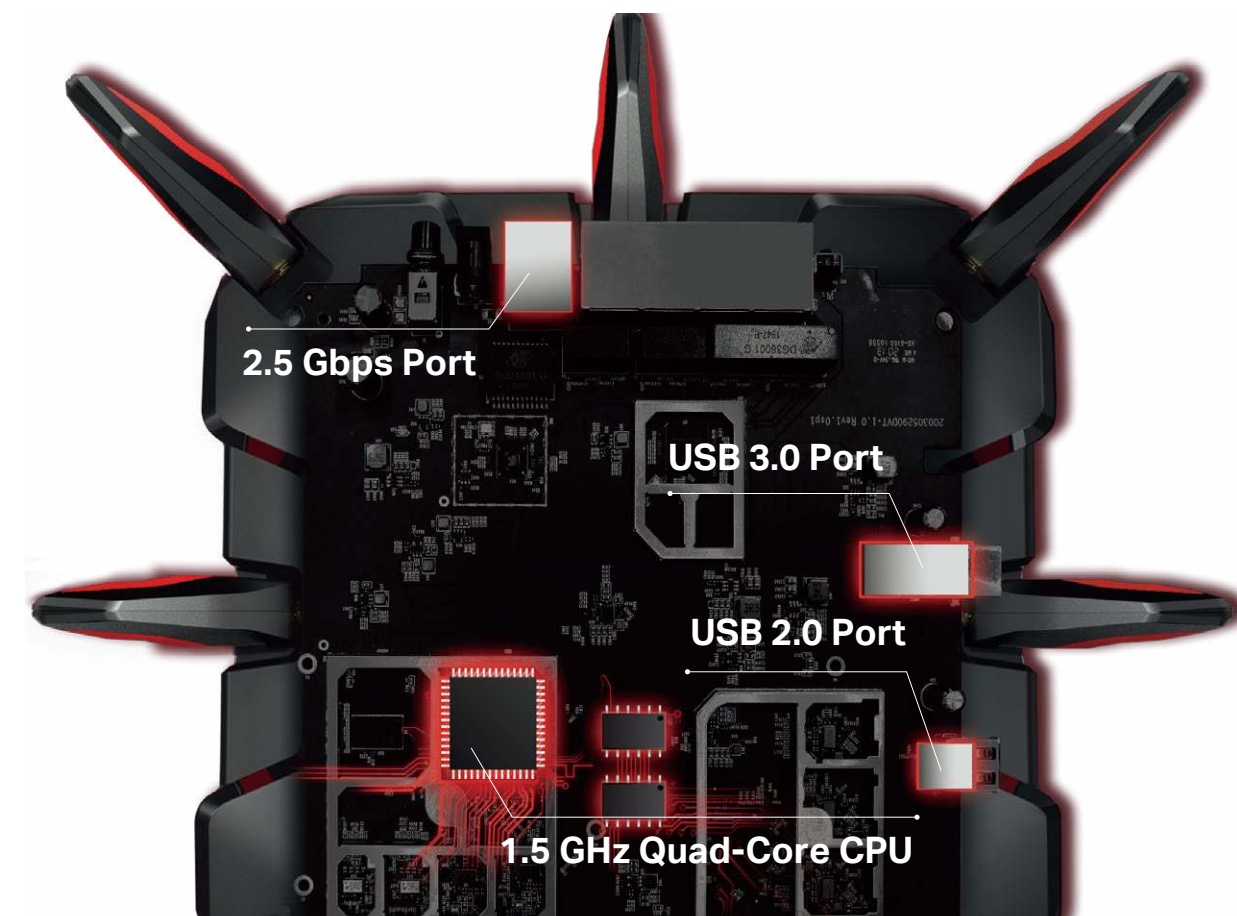
8 STREAMS
Higher simultaneous transmission capability

HT160[‡]
The highest channel width on a single stream

1024-QAM[‡]
More data encoded at one time

Battle-Tested Hardware

Powerful quad-core CPU assures every packet of data is transmitted without delay even under heavy loads. The 2.5 Gbps gaming port breaks the gigabit bottleneck and unleashes huge throughput for your online play.**



Highlights

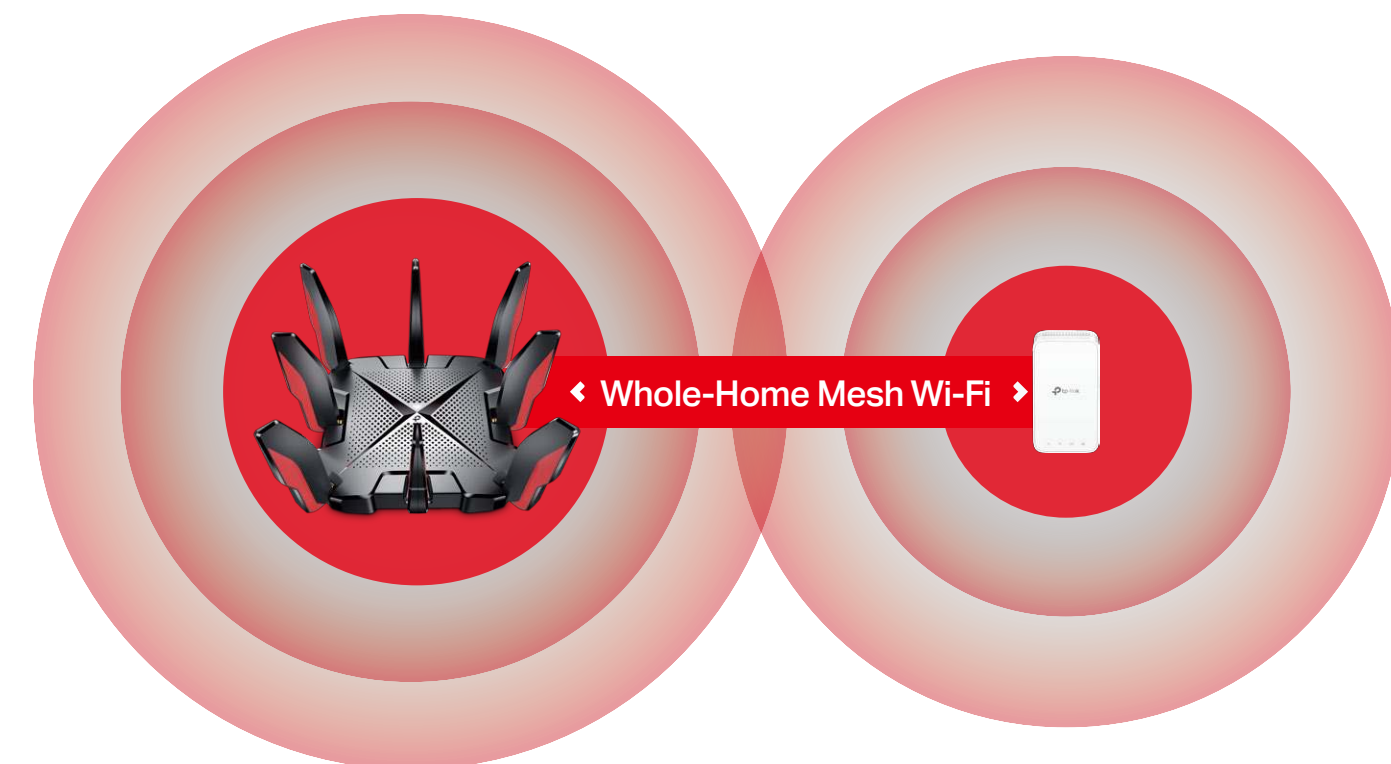
Keep Elements Secure

Game Protector keeps your accounts and system safe. Alongside the latest WPA3 protocol, this HomeCare™ security system protects every device from the latest cyber threats, ensuring your total security while gaming online.



Flexible Whole-Home Wi-Fi

Eight high-performance antennas, Beamforming, and high-power FEM combine to deliver broad coverage. Furthermore, Archer GX90 supports OneMesh™ to form seamless whole-home coverage, preventing drops and lag when moving between signals.

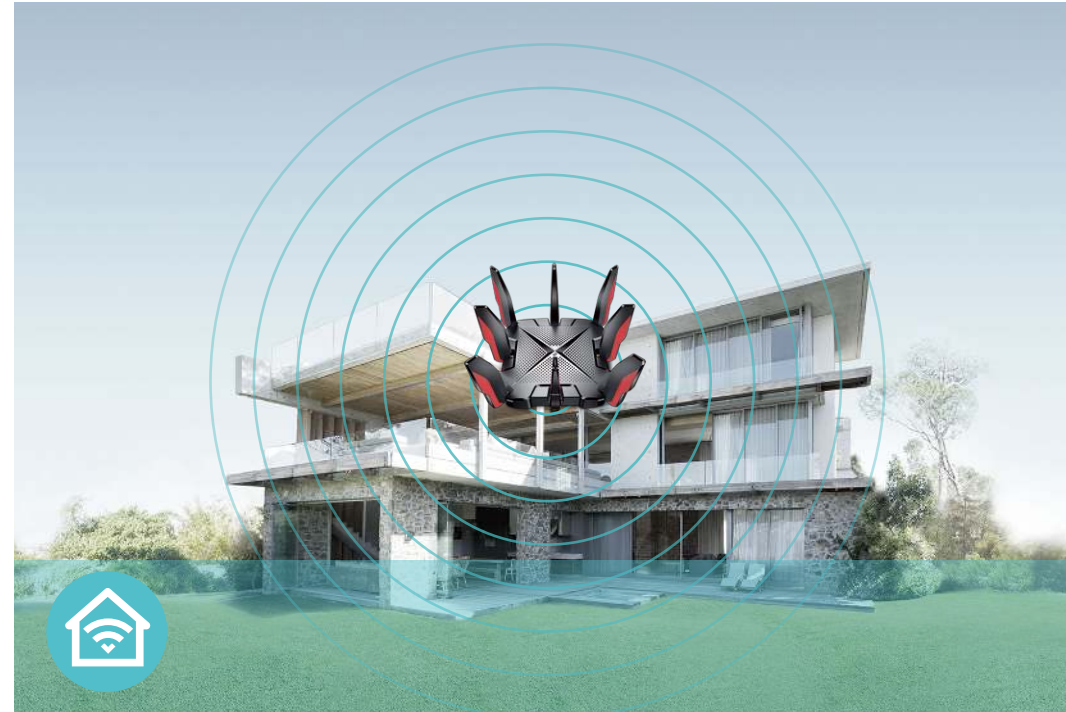


Features



Speed

- **Unthrottled Speeds** – Enjoy ultra-fast 6.6 Gbps Wi-Fi boosted by the Wi-Fi 6 standard with 1024-QAM and HT160 technologies.†
- **OFDMA** – Provides 4× greater capacity for more simultaneous connections.‡
- **Next-Gen Wireless Speed** – 4804 Mbps (5 GHz) + 1201 Mbps (5 GHz) + 574 Mbps (2.4 GHz)†



Wi-Fi Range

- **Ultimate Range Wi-Fi** – Eight high-gain external antennas deliver a Wi-Fi signal to every corner of your home, making all of your connections more efficient and stable.
- **Beamforming Technology** – Concentrates Wi-Fi signals towards individual devices to ensure stronger connections



Reliability

- **Secure VPN Access** – Connects to a private network with a safe and secure OpenVPN and PPTP VPN connection
- **Airtime Fairness** – Balances bandwidth of connected devices to improve overall throughput and efficiency
- **Smart Connect** – Intelligently switches each device's connection to the optimum available Wi-Fi band

Features



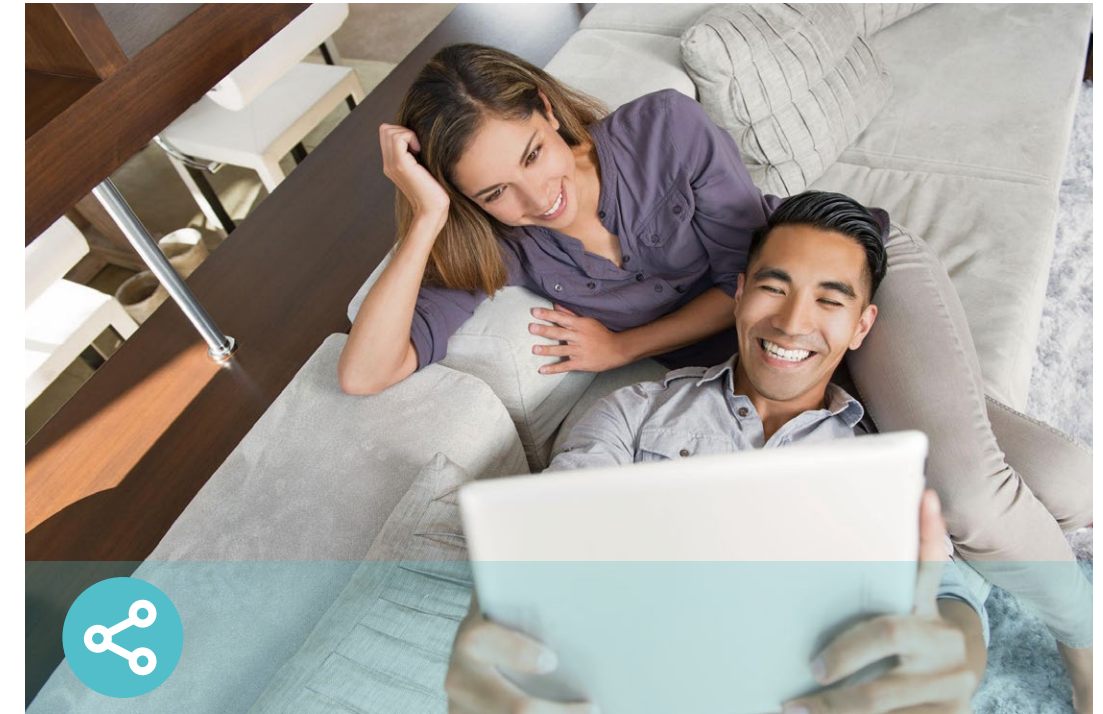
Ease of Use

- Intuitive Web UI – Ensures quick and simple installation without hassle
- WPS (Wi-Fi Protected Setup) – Help you to quickly and securely connect your devices to the router's network with a tap
- Power On/Off – Conveniently power on or off your router as required
- Hassle-free Management with Tether App – Network management is made easy with the TP-Link Tether app, available on any Android and iOS device



Security

- Parental Controls – Manage when and how connected devices can access the internet
- Guest Network – Provides separate access for guests to secure the home network
- Access Control – Establishes a whitelist or blacklist to allow or restrict certain devices to access the internet
- Encryptions for Secure Network – WPA/WPA2-Personal, WPA2/WPA3-Personal, WPA/WPA2-Enterprise encryptions provide active protection against security threats



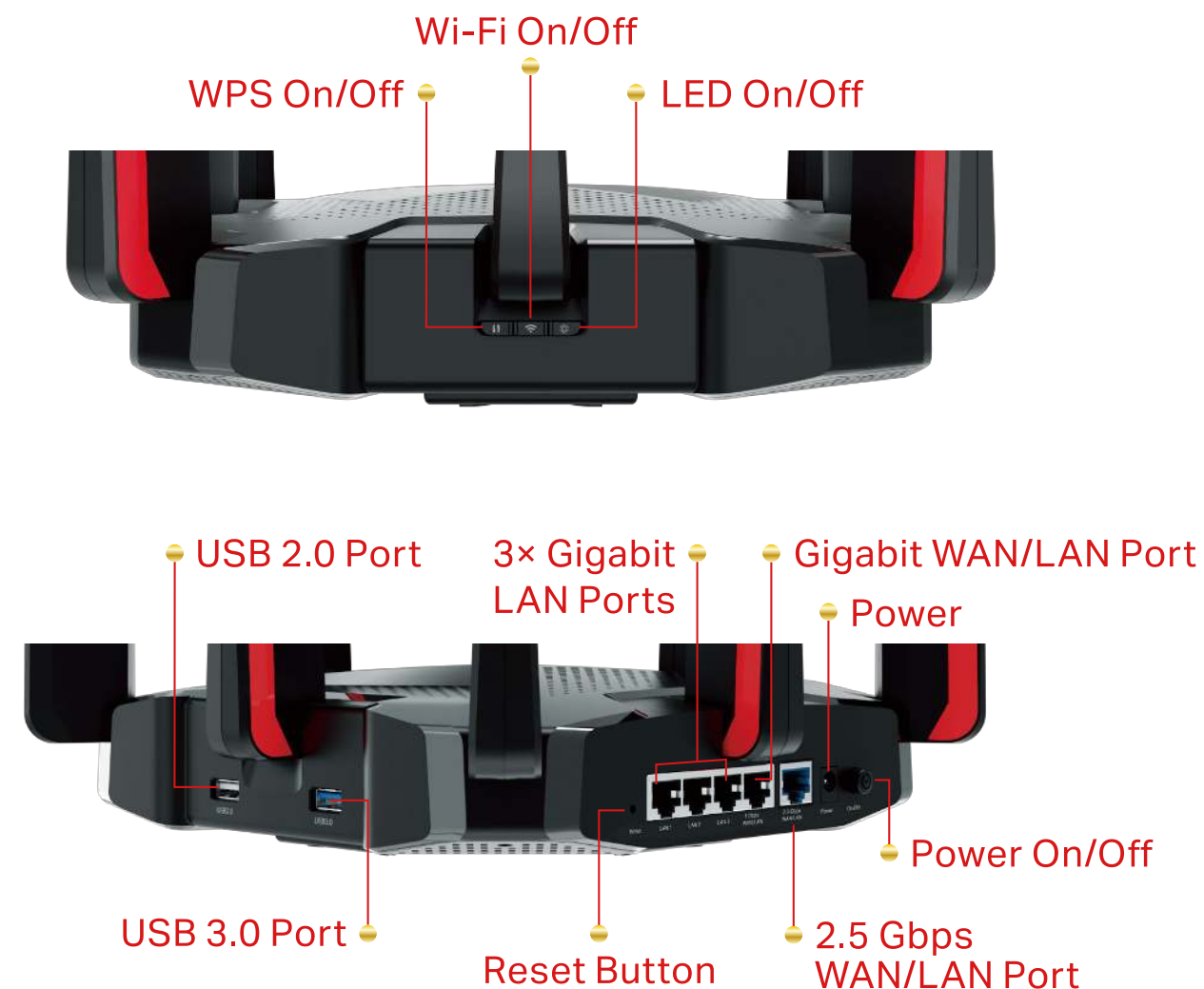
Easy Sharing

- USB Port – Connects external storage devices to rapidly share files, photos, and videos
- Built-in Media Server – Allows you to play music, watch videos and view photos from any device on your network

Specifications

Hardware

- Wireless: 4804 Mbps (5 GHz) + 1201 Mbps (5 GHz) + 574 Mbps (2.4 GHz)[†]
- Hardware: 1.5 GHz Quad-Core CPU
- Ethernet Ports: 1× 2.5 Gbps WAN/LAN Port + 1× Gigabit WAN/LAN Port + 3× Gigabit LAN Ports
- USB Ports: 1× USB 3.0 Port + 1× USB 2.0 Port
- Dimensions: 8.3 × 8.3 × 2.0 in (212 × 212 × 51.8 mm)



Wireless

- Wireless: 4804 Mbps (5 GHz, 11ax) + 1201 Mbps (5 GHz, 11ax) + 574 Mbps (2.4 GHz, 11ax), compatible with 11a/b/g/n/ac Wi-Fi standards
- Frequency: 2.4 GHz and 5 GHz
- Transmit Power:
 - CE:
 - <20dBm(2.4GHz)
 - <23dBm(5.15GHz~5.35GHz)
 - <30dBm(5.47GHz~5.725GHz)
 - FCC:
 - <30dBm(2.4GHz & 5.15GHz~5.25GHz & 5.725GHz~5.825GHz)
 - <24dBm(5.25GHz-5.35GHz & 5.47GHz-5.725 GHz)
- Reception Sensitivity:
 - 5 GHz-1:
 - 11a 6Mbps:-93dBm, 11a 54Mbps:-76dBm
 - 11ac VHT20 MCS0:-92dBm, 11ac VHT20 MCS8:-69dBm
 - 11ac VHT40 MCS0:-90dBm, 11ac VHT40 MCS9:-65dBm
 - 1ac VHT80 MCS0:-87dBm, 11ac VHT80 MCS9:-62dBm
 - 11ax HE20 MCS0:-93dBm, 11ax HE20 MCS11:-62dBm
 - 11ax HE40 MCS0:-90dBm, 11ax HE40 MCS11:-59dBm
 - 11ax HE80 MCS0:-87dBm, 11ax HE80 MCS11:-56dBm
 - 5 GHz-2:
 - 11a 6Mbps:-96dBm, 11a 54Mbps:-77dBm
 - 11ac VHT20 MCS0:-95dBm, 11ac VHT20 MCS11:-64dBm
 - 11ac VHT40 MCS0:-93dBm, 11ac VHT40 MCS11:-62dBm
 - 1ac VHT80 MCS0:-90dBm, 11ac VHT80 MCS11:-59dBm
 - 1ac VHT160 MCS0:-84dBm, 11ac VHT160 MCS11:-53dBm
 - 11ax HE20 MCS0:-93dBm, 11ax HE20 MCS11:-62dBm
 - 11ax HE40 MCS0:-90dBm, 11ax HE40 MCS11:-59dBm
 - 11ax HE80 MCS0:-87dBm, 11ax HE80 MCS11:-57dBm
 - 11ax HE160 MCS0:-84dBm, 11ax HE160 MCS11:-54dBm
 - 2.4 GHz:
 - 11g 6Mbps:-96dBm, 11g 54Mbps:-77dBm
 - 11n HT20 MCS0:-95dBm, 11n HT20 MCS7:-76dBm
 - 11n HT40 MCS0:-93dBm, 11n HT40 MCS7:-73dBm
 - 11ac VHT20 MCS0:-95dBm, 11ac VHT20 MCS8:-73dBm
 - 11ac VHT40 MCS0:-92dBm, 11ac VHT40 MCS9:-68dBm
 - 11ax HE20 MCS0:-95dBm, 11ax HE20 MCS11:-64dBm
 - 11ax HE40 MCS0:-95dBm, 11ax HE40 MCS11:-62dBm
- Wireless Function: Enable/Disable Wireless Radio, WMM, Wireless Statistics
- Wireless Security: WPA/WPA2-Personal, WPA2/WPA3-Personal, WPA/WPA2-Enterprise

Specifications

Software

- Quality of Service: Device Prioritisation
- WAN Type: Dynamic IP/Static IP/PPPoE/PPTP(Dual Access)/L2TP(Dual Access)
- Management: Access Control, Local Management, Remote Management
- DHCP: Server, DHCP Client List, Address Reservation
- NAT Forwarding: Port Forwarding, Port Triggering, UPnP, DMZ
- Dynamic DNS: DynDns, NO-IP, TP-Link
- Access Control: Parental Controls, Local Management Control, Host List, White List, Black List
- Firewall Security: SPI Firewall, IP and MAC Address Binding
- Protocols: IPv4, IPv6
- USB Sharing: Supports Samba(Storage)/FTP Server/Media Server
- Guest Network: 2.4 GHz Guest Network, 5 GHz Guest Network
- VPN Server: OpenVPN, PPTP VPN

Others

- Certification:
FCC, CE, RoHS
- System Requirements:
Microsoft Windows 98SE/NT/2000/XP/Vista™/7/8/8.1/10, MAC OS, NetWare, UNIX or Linux

Internet Explorer 11, Firefox 12.0, Chrome 20.0, Safari 4.0, or other Java-enabled browser

Cable or DSL Modem

Subscription with an internet service provider (for internet access)
- Environment:
Operating Temperature: 0°C~40°C (32°F ~104°F)
Operating Humidity: 10%~90% non-condensing
- Package Contents
Wireless Router Archer GX90
Power Adapter
RJ45 Ethernet Cable
Quick Installation Guide



For more information, please visit

https://www.tp-link.com/products/details/?model=Archer+GX90_V1

or scan the QR code left

†Maximum wireless signal rates are the physical rates derived from IEEE Standard 802.11 specifications. Actual wireless data throughput and wireless coverage are not guaranteed and will vary as a result of network conditions, client limitations, and environmental factors.

‡Use of 802.11ax (Wi-Fi 6), OFDMA, HT160, and/or 1024-QAM requires clients to also support the corresponding features. The 160 MHz bandwidth may be unavailable in the 5 GHz band in some regions/countries due to regulatory restrictions.

§The 802.11ax white paper defines standardized modifications to both the IEEE 802.11 physical layers (PHY) and the IEEE 802.11 Medium Access Control (MAC) layer as enabling at least one mode of operation capable of supporting improvement of at least four times the average throughput per station (measured at the MAC data service access point) in a dense deployment scenario.

ΔUse of MU-MIMO and/or WPA3 requires clients to also support MU-MIMO.

*Any revision to a supported game may influence Game Accelerator's ability to support it. Please refer to our product page for the full list of supported games.

**2.5 Gbps Internet speeds require compatible service plans and equipment. The 2.5 Gbps and Gigabit port cannot be concurrently configured as WAN ports.

***This router may not support all the mandatory features as ratified in Draft 3.0 of the IEEE 802.11AX specification.

****Further software upgrades for feature availability may be required.

©2020 TP-Link