

# Robotic Vacuum Cleaner

User's manual

EN



**SENCOR®**

SVC 7020BK

SVC 7020VT

Prior to using this appliance, please read the user's manual thoroughly, even in cases, when one has already familiarised themselves with previous use of similar types of appliances. Use the appliance only as described in this manual. Keep this manual for later use.

We recommend saving the original shipping cardboard box, packaging material, receipt and warranty card for the duration of warranty. In the case of transportation, pack the appliance using the original packaging materials only.

## CONTENTS

IMPORTANT SAFETY INSTRUCTIONS .....	3
BASIC CHARACTERISTICS OF THE ROBOTIC VACUUM CLEANER .....	5
DESCRIPTION OF THE ROBOTIC VACUUM CLEANER .....	6
ACCESSORIES SUPPLIED WITH THE ROBOTIC VACUUM CLEANER .....	8
INSTALLING AND CHARGING BATTERIES .....	9
SETTING SENSORS TO PREVENT THE ROBOTIC VACUUM CLEANER FROM FALLING DOWN STAIRS... 10	
INSTALLING AND REMOVING THE ROTARY BRUSHES .....	11
ATTACHING AND USING THE DUSTER .....	12
USING THE ROBOTIC VACUUM CLEANER .....	12
MAINTENANCE AND CLEANING .....	13
TROUBLESHOOTING TABLE .....	15
TECHNICAL SPECIFICATIONS .....	16
INSTRUCTIONS AND INFORMATION REGARDING THE DISPOSAL OF USED PACKAGING MATERIALS . 16	
DISPOSAL OF USED BATTERIES .....	16
DISPOSAL OF USED ELECTRICAL AND ELECTRONIC EQUIPMENT .....	16

## IMPORTANT SAFETY INSTRUCTIONS

**This robotic vacuum cleaner may be used by children 8 years of age and older and by persons with physical or mental impairments or by inexperienced persons if they are properly supervised or have been informed about how to use this robotic vacuum cleaner in a safe manner and understand the potential dangers. Do not allow children to play with the vacuum cleaner. This appliance may be cleaned by children 8 years of age and older if they are properly supervised. Keep this robotic vacuum cleaner and the power adapter out of reach of children, younger than 8 years of age.**

# Robotic Vacuum Cleaner

SVC 7020BK / SVC 7020VT

## IMPORTANT SAFETY INSTRUCTIONS READ CAREFULLY AND STORE IT FOR FUTURE USE.

- This robotic vacuum cleaner is designed for use in households, offices and similar types of areas. Do not use in rooms with high humidity, e.g. in laundries or bathrooms, in industrial environments or outdoors.
- Do not expose the robotic vacuum cleaner to direct sunlight and do not place it near an open fire or appliances that are a source of heat.
- Only use the robotic vacuum cleaner with original accessories from the manufacturer.
- Before connecting the adapter to a power socket check that the technical details on the rating label match the electrical voltage in the socket.
- To avoid any injury by electrical shock, do not spray the robotic vacuum cleaner with water and do not submerge in water or any other liquid.
- Ensure that the robotic vacuum cleaner has a dust filter correctly installed in the dust container before use.
- Before putting the robotic vacuum cleaner into operation, check that the entry door into your apartment or house is closed. From the floor surfaces remove clothing, paper, toys, power or extension cords and other items that the vacuum cleaner could suck in or catch. Lift curtains and drapes that reach to the floor so that they do not get caught in the vacuum cleaner.
- Do not place any items on to the robotic vacuum cleaner and do not step or sit on it.
- If the robotic vacuum cleaner is running, watch out for children and household pets.
- When the robotic vacuum cleaner is running, ensure that the air outlet openings are not covered and that the suction opening is not blocked. Otherwise the vacuum cleaner may be damaged.
- Do not use the robotic vacuum cleaner to vacuum the following items:
  - smouldering cigarettes, burning or flammable items, matches or ash;
  - water and other liquids;
  - sharp items, e.g. splinters, needles, pins, etc.;
  - flour, wall plaster and other building materials;
  - larger pieces of paper or plastic bags, which can easily block the suction opening.
- Always disconnect the robotic vacuum cleaner from the power socket and move the main switch to the off position (0) before cleaning.
- To charge the batteries only use the power adapter supplied with this robotic vacuum cleaner.
- Make sure the power cord of the adapter is not touching a hot surface.
- It is forbidden to use a power adapter with a damaged plug or power cord. For a replacement power adapter contact an authorised service centre.
- If you will not be using the robotic vacuum cleaner for an extended period of time, remove the rechargeable batteries. Prior to taking out the batteries ensure that the vacuum cleaner is disconnected from the power socket and that the main switch is in the off position (0).
- Do not use the robotic vacuum cleaner if it is not working correctly, if it has been damaged or has been submerged in water. To avoid the danger of injury by electrical shock, do not repair the vacuum cleaner yourself or make any adjustments to it. Have all repairs or adjustments performed at an authorised service centre. Tampering with the vacuum cleaner during the warranty period may void the warranty.

# Robotic Vacuum Cleaner

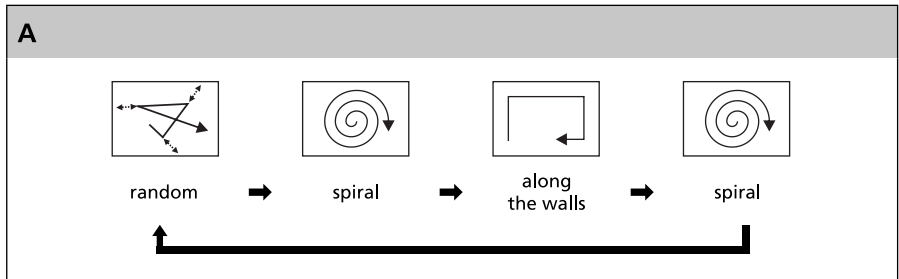
SVC 7020BK / SVC 7020VT

EN

## BASIC CHARACTERISTICS OF THE ROBOTIC VACUUM CLEANER

- The SVC 7020 Robotic Vacuum Cleaner is designed for vacuuming wooden, laminate or vinyl floors, PVC floor coverings, tiles, etc.
- The robotic vacuum cleaner can be safely operated also in rooms where there are stairs as it is equipped with built-in sensors, which prevent the vacuum cleaner from falling down the stairs.
- During its operation, the robotic vacuum cleaner has 3 various automatic motion modes. This ensures that the entire floor area is well vacuumed.

## Automatic motion cycle of the robotic vacuum cleaner



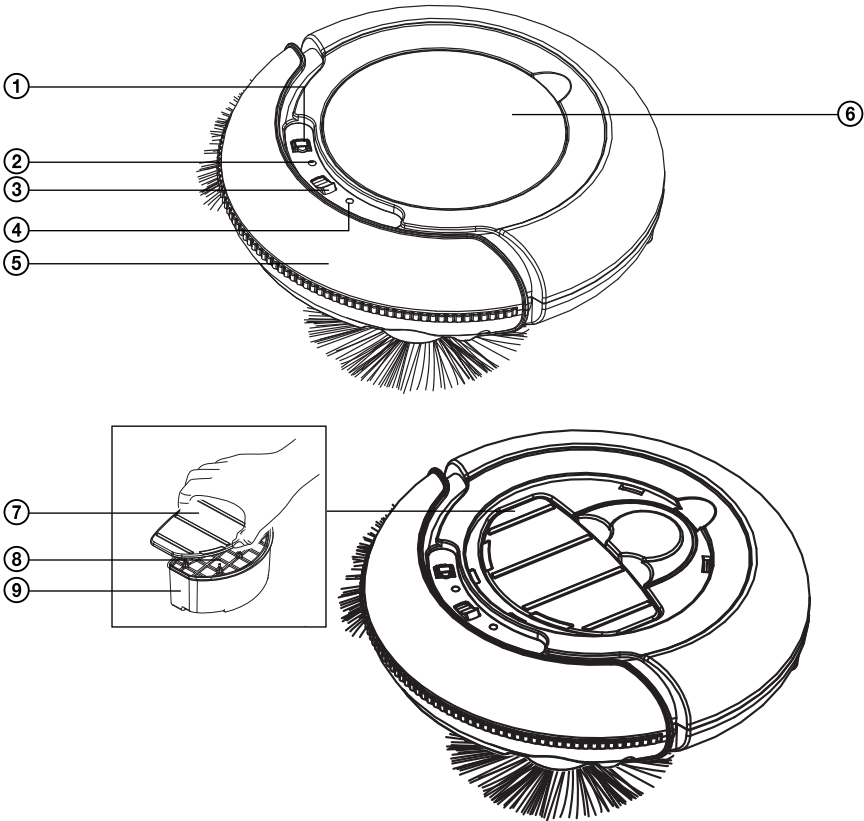
- The suspended bumper enables the vacuum cleaner to dampen the approach to an obstacle and to efficiently clean around it.
- For improved cleaning the robotic vacuum cleaner is equipped with:
  - side rotary brushes for sweeping dirt and dust from along the walls and from corners into the dust container;
  - duster for wiping dirt and dust from the floor.

# Robotic Vacuum Cleaner

SVC 7020BK / SVC 7020VT

## DESCRIPTION OF THE ROBOTIC VACUUM CLEANER

**B**



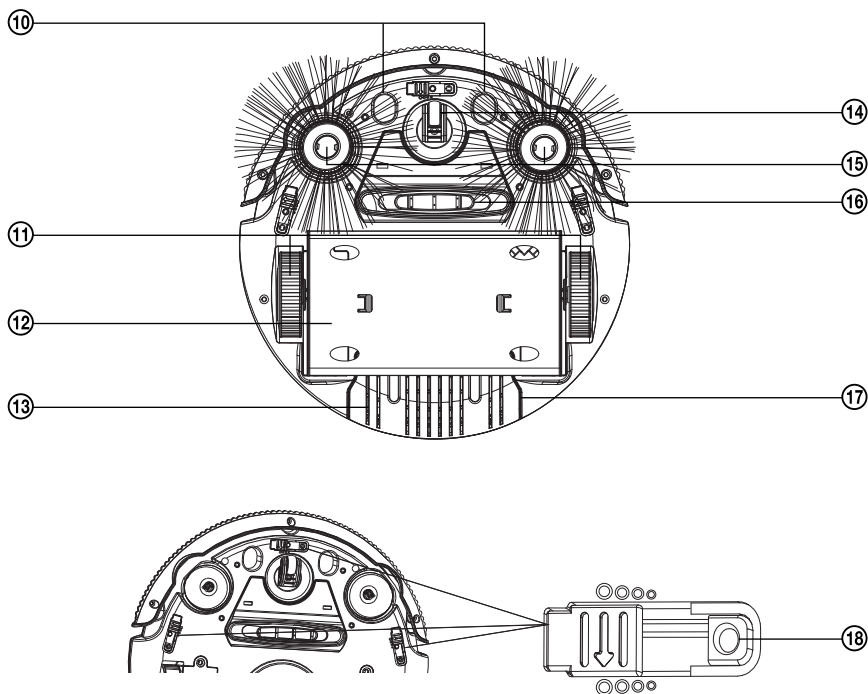
- |  |                         |
|--|-------------------------|
| ① Power adapter connection socket      | ⑥ Removable top cover   |
| ② Green LED battery charging indicator | ⑦ Dust container lid    |
| ③ Main power switch (I – On / 0 – Off) | ⑧ Removable dust filter |
| ④ Red LED flat battery indicator       | ⑨ Dust container        |
| ⑤ Suspended bumper                     |                         |

# Robotic Vacuum Cleaner

SVC 7020BK / SVC 7020VT

EN

B



⑩ Openings for handling and carrying of the vacuum cleaner

⑪ Left and right wheel

⑫ Duster holder

⑬ Ventilation slits

⑭ Front swivel wheel

⑲ Side rotary brushes

⑳ Suction opening

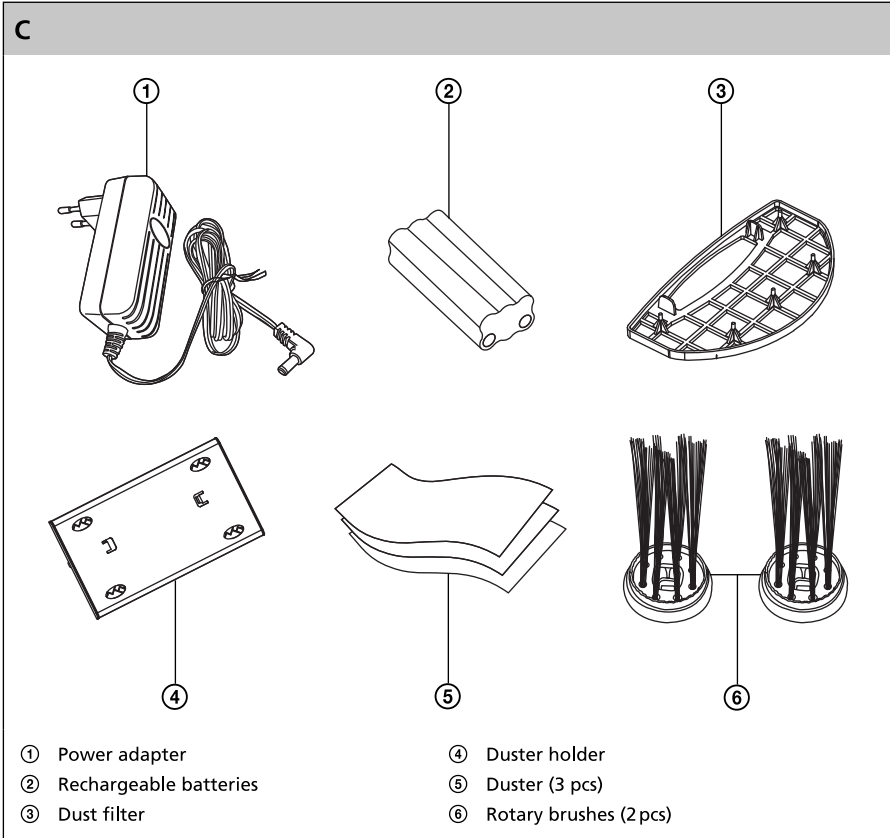
㉑ Battery compartment cover

㉒ Stair fall prevention sensors

# Robotic Vacuum Cleaner

SVC 7020BK / SVC 7020VT

## ACCESSORIES SUPPLIED WITH THE ROBOTIC VACUUM CLEANER

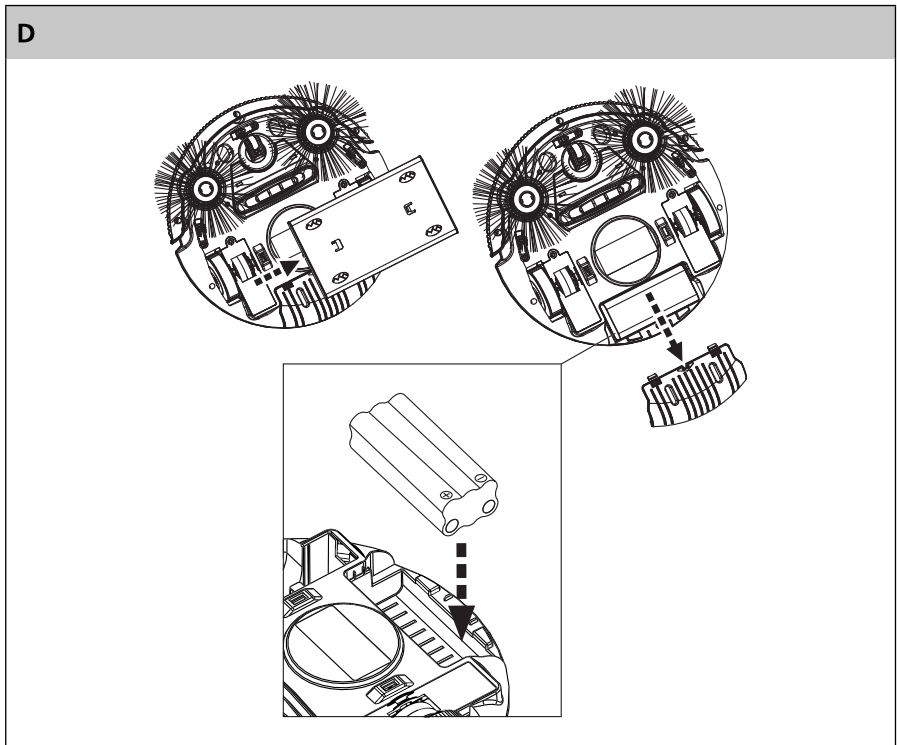




## INSTALLING AND CHARGING BATTERIES

### Installing batteries

1. Check that the main power switch B③ is in the Off position (0).
2. Remove the duster holder B⑩.
3. Slide out the battery compartment cover B⑰.
4. Insert rechargeable batteries C② into the compartment and close the cover B⑰.



**Note:**

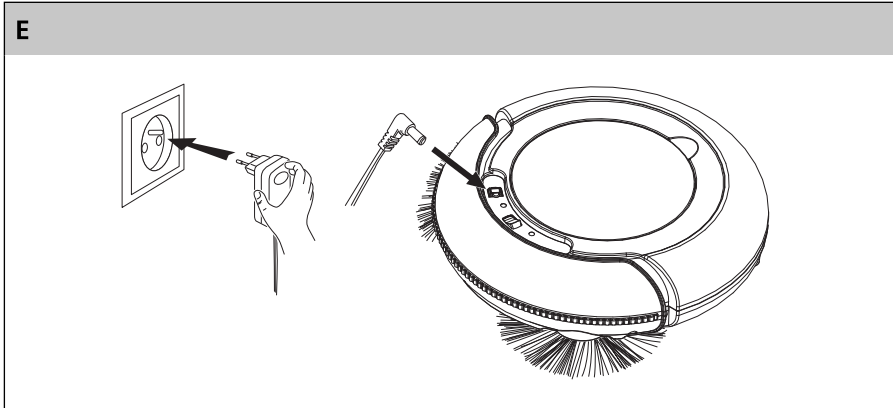
When inserting the batteries ensure the correct polarity as shown in the battery compartment.

# Robotic Vacuum Cleaner

SVC 7020BK / SVC 7020VT

## Charging batteries

1. Before charging batteries, check that the main power switch B③ is in position Off (0) and that the batteries are properly installed in the vacuum cleaner.
2. Connect the connector of the power adapter to the connection socket B① and insert the power adapter plug into an el. power socket.



3. The green LED B② flashes during the charging process. When the batteries are fully charged, the green LED indicator light B② remains lit.



### Note:

To ensure optimal performance of the rechargeable batteries and to extend their lifespan, we recommend that you always allow the batteries to fully charge. The charging of batteries takes 4 hours and then it is automatically ended.

If you forget to turn off the robotic vacuum cleaner before charging the batteries, you need to first turn it off after charging and only then turn it on again. Otherwise it will not be possible to put the vacuum cleaner into operation.

## SETTING SENSORS TO PREVENT THE ROBOTIC VACUUM CLEANER FROM FALLING DOWN STAIRS

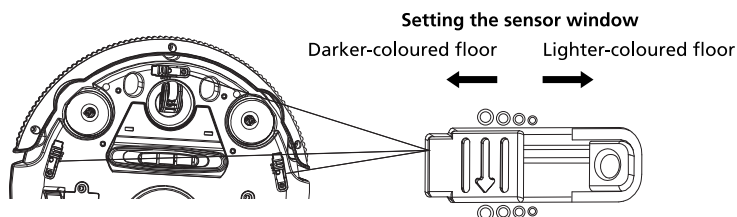
1. Check that the vacuum cleaner is turned off and disconnected from the el. power socket.
2. There are three sensors on the underside of the robotic vacuum cleaner preventing the vacuum cleaner from falling, e.g. down stairs. Before using the robotic vacuum cleaner in a room where it could fall from stairs, set all three sensors according to the following instructions:
  - Dark coloured floors do not reflect light as well. Before using the vacuum cleaner on such a floor, open the window of Sensor B⑩ to a greater extent.
  - Light coloured floors are better at reflecting light. Before using the vacuum cleaner on such a floor, open the window of Sensor B⑩ only partially.
  - Set all three sensors in the same way.

# Robotic Vacuum Cleaner

SVC 7020BK / SVC 7020VT

EN

F



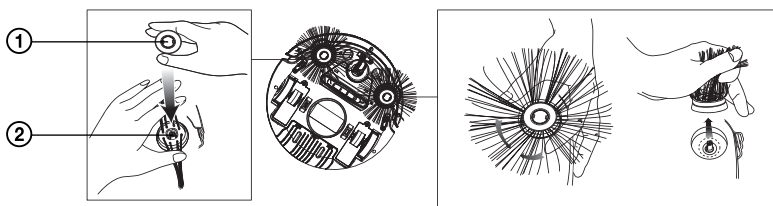
**Attention:**

Check the sensor setting by turning on the robotic vacuum cleaner in the room where the stairs are located. In the event that the vacuum cleaner drives over the edge of the floor, catch it so that it does not fall from the stairs. Turn off the vacuum cleaner and adjust the sensor settings.

## INSTALLING AND REMOVING THE ROTARY BRUSHES

1. Check that the vacuum cleaner is turned off and disconnected from the el. power socket.
2. To attach the rotary brush to the vacuum cleaner remove the brush attachment cover G① from the shaft G②. On to shaft G② attach brush B⑬ and fasten it in position with the cover G①.
3. To remove the rotary brush, hold brush B⑬ by its bristles and pull it upwards to pull it out. After removing the brush attach the attachment cover G① back on to the shaft G②.

G



- ① Brush attachment cover  
② Shaft



**Attention:**

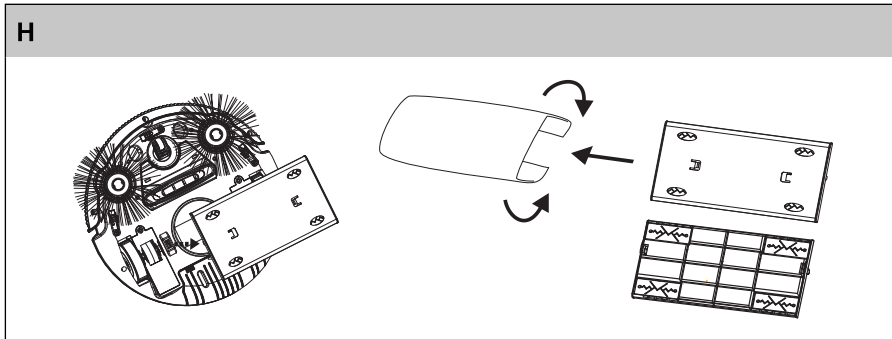
Do not install the side rotary brush on to the vacuum cleaner if it is used in a room where there are carpets.

# Robotic Vacuum Cleaner

SVC 7020BK / SVC 7020VT

## ATTACHING AND USING THE DUSTER

1. Hold the duster holder B② by the edge and remove it from the underside of the vacuum cleaner.
2. Fold the duster C⑤ over and insert its edges into the openings on the duster holder.
3. Reattach the duster holder B② with the attached duster C⑤ to the underside of the robotic vacuum cleaner.

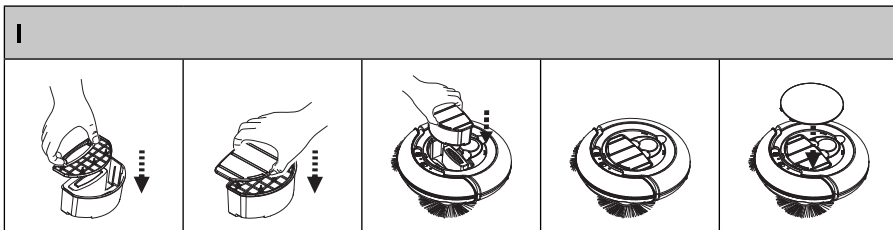


### Attention:

Only use dusters specified for this robotic vacuum cleaner.  
Do not use the holder without the duster attached.  
The duster is not suitable for cleaning carpets.

## USING THE ROBOTIC VACUUM CLEANER

1. Before putting the robotic vacuum cleaner into operation, check that the dust container B⑨, B⑦ including the dust filter B⑧ are properly installed inside.



2. Place the vacuum cleaner on the floor in a location with enough free space. Put the vacuum cleaner into operation by moving the main power switch B③ to the On position (I).
3. LED indicator lights B② and B④ intermittently flash while the robotic vacuum cleaner is running.
4. If the batteries are almost flat, the robotic vacuum cleaner will automatically stop operating. The red LED indicator light B④ will light up on the control panel and a sound will be made. After the batteries are fully discharged the red LED indicator light B④ will turn off.

# Robotic Vacuum Cleaner

SVC 7020BK / SVC 7020VT

EN

5. After finishing operation move the main power switch B③ to the Off position (0).
6. Empty the dust container B⑨ after each use according to the instructions contained in chapter Maintenance and Cleaning.



**Attention:**

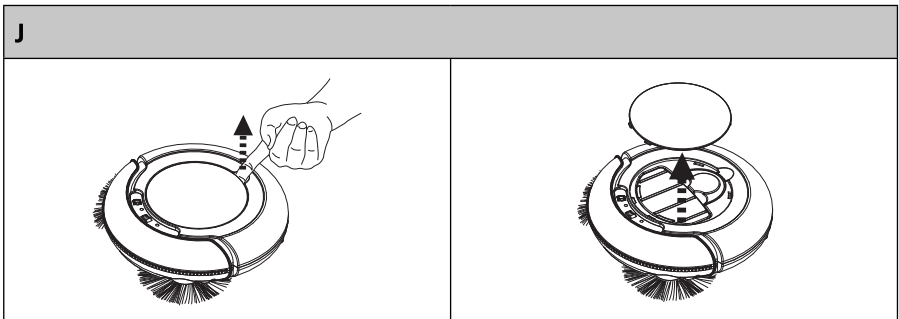
This robotic vacuum cleaner is not designed for vacuuming carpets.

## MAINTENANCE AND CLEANING

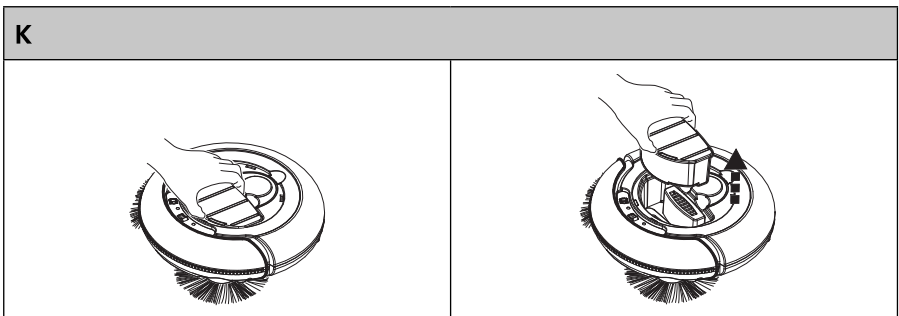
Before cleaning it, check that the vacuum cleaner is turned off and disconnected from the el. power source.

### Cleaning the dust container

1. Lift up and remove the top vacuum cleaner cover B⑥.



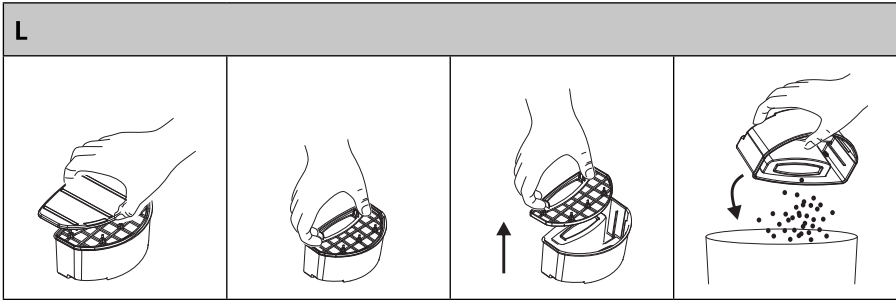
2. Take out the dust container B⑨.



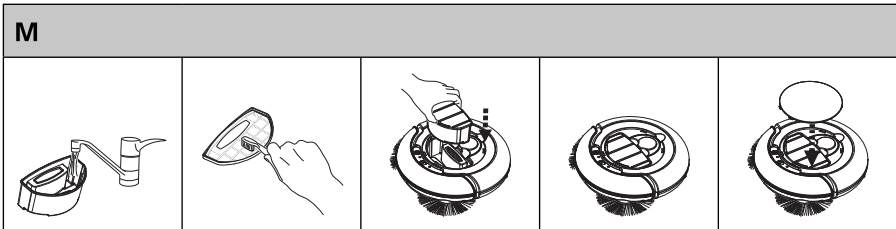
# Robotic Vacuum Cleaner

SVC 7020BK / SVC 7020VT

3. Take off the dust container lid B⑦. Take the dust filter B⑧ out of the dust container B⑨ and empty out the contents of the container.



4. Wash the container B⑨ under clean running water. Clean the dust filter B⑧ with a soft brush. If you have washed the container B⑨ under running water, dry it thoroughly and only then insert the dust filter B⑧ back into it. Close the container lid B⑦. Return the assembled dust container back into the vacuum cleaner and shut the top cover B⑥.



**Note:**

It is not necessary to wash the container after every use.



**Attention:**

Before putting the vacuum cleaner back into operation, check that the dust filter is properly installed in its location. Otherwise the vacuum cleaner may be damaged.

Do not wash the container in a dishwasher.

## Cleaning the suction opening

- During the course of repeated use dirt and dust may accumulate around the suction opening B⑩. This may result in a reduced suction efficiency. Remove the dirt dust from the suction opening using a soft brush. Regularly clean the suction opening to ensure maximum suction power.

# Robotic Vacuum Cleaner

SVC 7020BK / SVC 7020VT

EN

## Cleaning the rotary brushes

1. Hold the side rotary brushes B<sup>®</sup> by their bristles and remove by pulling away from the vacuum cleaner.
2. Remove all dust and dirt from the brushes. If necessary you may wash the brushes under running water. If the bristles were deformed while the vacuum cleaner was running, dip them in warm water to allow them to return to their original shape.
3. Allow the brushes to dry before reattaching to the vacuum cleaner. Attach brushes B<sup>®</sup> to the vacuum cleaner according to the instructions included in chapter Installation and Removal of Rotary Brushes.
4. The rotary brushes become worn out when used. After a certain time it is necessary to replace the used brushes with new ones. To order new brushes, please contact your vendor or an authorised service centre.

## TROUBLESHOOTING TABLE

PROBLEM	POSSIBLE CAUSE	SOLUTION
The red LED indicator light is lit.	Batteries are flat. The vacuum cleaner is lifted off the floor.	Charge the batteries. Place the vacuum cleaner back on the floor.
The vacuum cleaner cannot be turned on.	The rechargeable batteries are not properly installed inside the vacuum cleaner. Batteries are flat.	Install the batteries according to the instructions in chapter Installation and Charging of Batteries. Recharge the batteries according to the instructions in chapter Installation and Charging of Batteries.
After 4 hours of charging the green LED indicator light is still flashing.	The charging of batteries is automatically ended after 4 hours. If the green LED indicator light is still flashing after 4 hours of the vacuum cleaner being connected to a power socket, it is possible that there was an el. power outage during the charging time.	The vacuum cleaner is fully functional. It can be put back into operation after it is disconnected from the power socket.
The vacuum cleaner is on but it is not vacuuming dust and dirt.	The dust container is full. The dust filter is not properly installed in the dust container.	Empty the dust container. Properly install the dust filter into the dust container.
The vacuum cleaner travels only backwards when it is turned on.	The vacuum cleaner was placed on a dark floor.	Set the fall prevention sensors according to the instructions in chapter Setting sensors to prevent the robotic vacuum cleaner from falling down stairs.
The rotary brushes are deformed and do not sweep up dust and dirt.	The brushes are worn out.	Dip them in warm water to renew their original shape. Contact your vendor or an authorised service centre to order new brushes.

## TECHNICAL SPECIFICATIONS

### Adapter:

Input 100–240 V~, 50/60 Hz.....	Output 19 V $\overline{\text{---}}$ , 600 mA
Rechargeable batteries.....	NiMH/800 mAh/14,4 V
Maximum operating time on fully charged batteries.....	60 minutes
Maximum power input.....	25 W
Suction power.....	7.5 W
Dust container capacity.....	180 ml
Noise level.....	55 dB(A)

The declared noise emission level for this appliance is 55 dB(A), which represents level A of the acoustic power relative to the reference acoustic power of 1 pW.

We reserve the right to change text and technical specifications.

## INSTRUCTIONS AND INFORMATION REGARDING THE DISPOSAL OF USED PACKAGING MATERIALS

Take the packaging material to a designated municipal waste facility.

### DISPOSAL OF USED BATTERIES

Batteries contain environmentally damaging compounds and therefore do not belong in standard household waste. Take the batteries to an appropriate collection point, which will provide for their ecological disposal. You can obtain the contact for the nearest collection point from you town council or from your retailer.

### DISPOSAL OF USED ELECTRICAL AND ELECTRONIC EQUIPMENT



This symbol on products or original documents means that used electric or electronic products must not be added to ordinary municipal waste. For proper disposal and recycling, take these products to designated collection points. Alternatively, in some European Union states or other European countries you may return your appliances to the local retailer when buying an equivalent new appliance. Correct disposal of this product helps save valuable natural resources and prevents damage to the environment caused by improper waste disposal. Ask your local authorities or collection facility for more details. In accordance with national regulations penalties may be imposed for the incorrect disposal of this type of waste.

#### For business entities in European Union states

If you want to dispose of electric or electronic devices, ask your retailer or supplier for the necessary information.

#### Disposal in other countries outside the European Union

This symbol is valid in the European Union. If you wish to discard this product, ask your local authorities or retailer about proper disposal.



This product meets all the basic requirements of EU directives that apply to it.