

Data Sheet

Danfoss Ally™ Gateway

Application



The Danfoss Ally™ Gateway is a programmable, wireless control system that connects all the Danfoss Ally™ devices to the internet and intelligently controls your heating via a free app downloadable from Google Play and App Store.

The power supply and LAN cable for the internet connection are included.

- Controls the daily heating schedule for every room allowing quick and easy adjustments to be made.

- The Pre-Heat function is used to ensure you have the right temperature when you want it. When Pre-Heat function is “On” it means that, it is ramping up to the next scheduled At Home mode.
- The Danfoss Ally™ Gateway software is automatically updated from the internet.

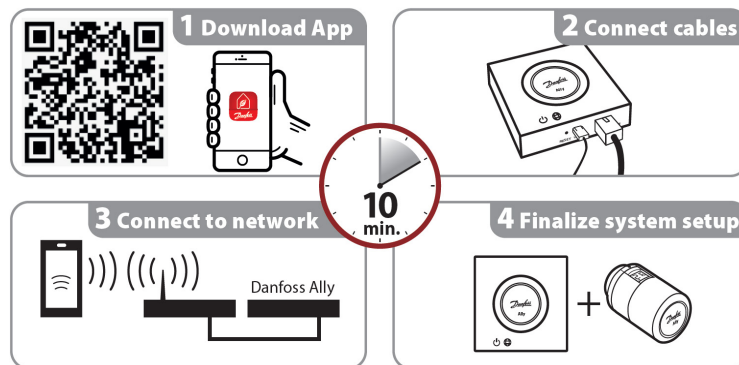
The total number of units for the one Danfoss Ally™ Gateway must not exceed 128 mains and 32 battery powered devices:

| | |
|---|-----------|
| Danfoss Ally™ Radiator Thermostat | 32 units |
| Danfoss Ally™ Room Sensor | |
| Danfoss Ally™ Zigbee Repeater | 128 units |
| Danfoss Icon™ Zigbee Module | 20 units |
| Danfoss Icon™ Master Controller (floor Heating) | 20 units |
| Danfoss Icon™ Room Thermostat | 128 units |
| Devices per room | 128 units |
| Devices per one gateway | 128 units |
| Rooms per one gateway | Unlimited |
| Homes/Families | Unlimited |

Ordering

| Product | Languages | Code no. |
|-----------------------|--|----------|
| Danfoss Ally™ Gateway | EN, DE, DA, FR, IT, ES, PL, CS, UA, RU, SE, FI, IS, ET, LV, LT, SK, SL, RO, HR, TR | 014G2400 |

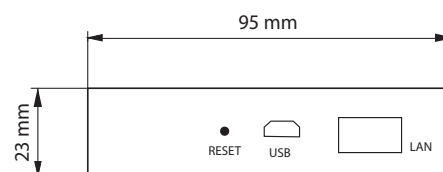
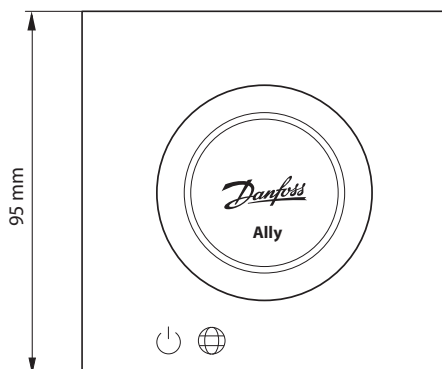
Easy Installation



Technical Specifications

| Danfoss Ally™ Gateway | |
|-------------------------------------|--|
| Device Function | Smart Home Gateway |
| Recommended Use | Residential indoor (pollution degree 2) |
| Application | Radiators, water-based floor heating |
| LED Indicators (green) | Power/Status, Network Connection |
| Button | Press Reset Button for 5 sec. to perform factory reset |
| Power Supply | 5 VDC |
| Adaptor | 110 V ~ 240 VAC, 5V 1A DC |
| Power Consumption / Standby | < 5 W / < 2 W |
| Wired Communication | 10/100M Ethernet Port (RJ45, LAN) |
| Wireless Communication | Zigbee / IEEE 802.15.4 |
| Transmission Frequency / Power | 2,4 GHz / < 20 dBm (79 mW) |
| Transmission range inside buildings | up to 30 m |
| Firmware Update | Support for over the air updates |
| Operation Temperature | -10 °C to 55 °C |
| Storage Temperature | -20 °C to 60 °C |
| Color | RAL 9016 |
| Size | 95 mm x 95 mm x 23 mm |
| IP class | 20 |
| Integrations | Amazon Alexa, Google Assistant, Partner API |
| Approval, markings etc. | |

Dimensions



Danfoss A/S

Climate Solutions • danfoss.com • +45 7488 2222

Any information, including, but not limited to information on selection of product, its application or use, product design, weight, dimensions, capacity or any other technical data in product manuals, catalogues descriptions, advertisements, etc. and whether made available in writing, orally, electronically, online or via download, shall be considered informative, and is only binding if and to the extent, explicit reference is made in a quotation or order confirmation. Danfoss cannot accept any responsibility for possible errors in catalogues, brochures, videos and other material. Danfoss reserves the right to alter its products without notice. This also applies to products ordered but not delivered provided that such alterations can be made without changes to form, fit or function of the product.

All trademarks in this material are property of Danfoss A/S or Danfoss group companies. Danfoss and the Danfoss logo are trademarks of Danfoss A/S. All rights reserved.