



Mini Suite Teepee™



LIST OF PIECES

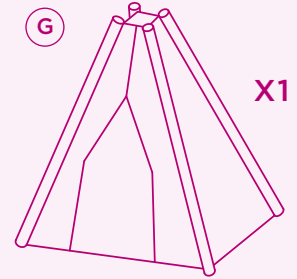
Round Pole



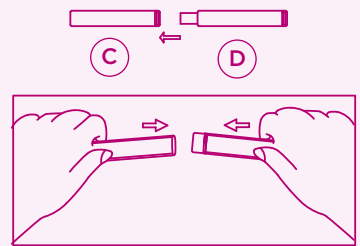
Corner Joints



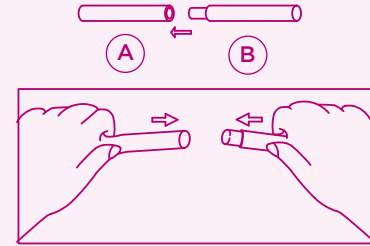
Fabric Teepee



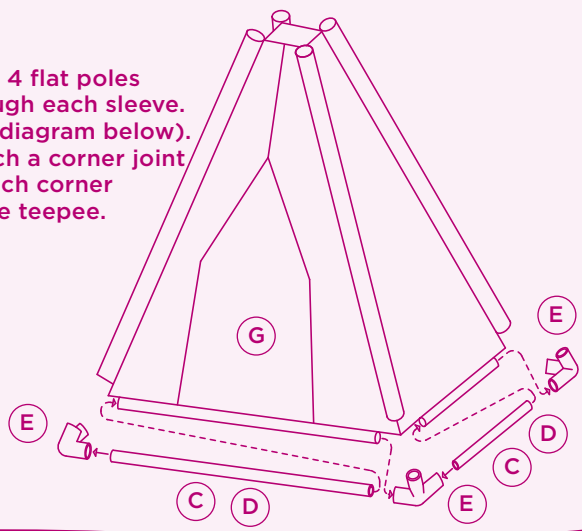
1 Use 4 flat poles to assemble the base.



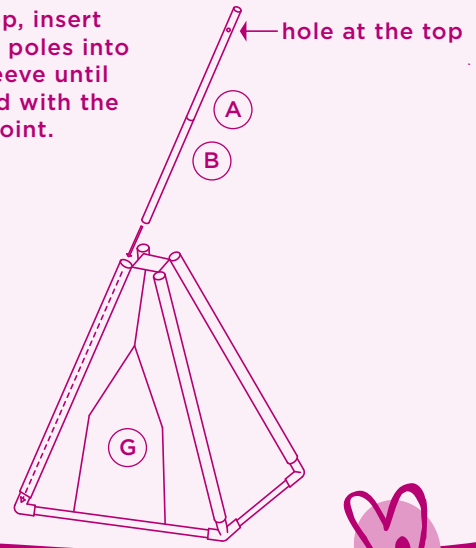
3 Use 4 round poles to assemble the vertical poles.



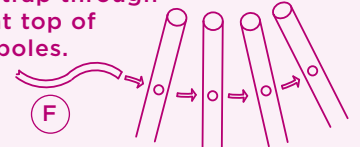
2 Slide 4 flat poles through each sleeve. (see diagram below). Attach a corner joint to each corner of the teepee.



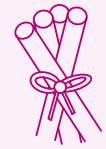
4 From top, insert 4 round poles into each sleeve until engaged with the corner joint.



5 Place the strap through the holes at top of the round poles.



6 Tighten all poles and make a bow.



You did it!
Time to play...



WARNING:
CHOKING HAZARD - Small parts.
Not for children under 3 years.

CAUTION: Adult assembly required.
Keep plastic bags out of children's reach
during and after assembly.