



Philips ThermoProtect  
Hairdryer

ThermoProtect  
2300W



HP8238/10



## 4x more ions for ultimate shiny hair

Protect your hair while enjoying fast drying results. This dryer includes ThermoProtect for fast drying at a constant caring temperature and 4 times more ions for the ultimate shiny result.

### Beautifully styled hair

- DC Motor and 2300W power
- Six flexible speed and temperature settings for full control
- Ultra narrow concentrator for perfect brushing
- Asymmetric diffuser for volume and natural curls
- Cool Shot sets your style

### Less hair damage

- 4x ionic conditioning for smooth, shiny and frizz free hair
- ThermoProtect, protects your hair against overheating

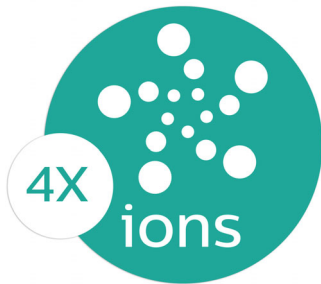
### Easy to use

- 1.8m power cord
- Easy storage hook for convenient storage

# PHILIPS

# Highlights

## Frizz free and shine



Give your hair an intensive boost with ionic conditioning. This hairdryer emits 4 times more negatively charged ions than other hairdryers. The result is ultimate shiny, frizz free hair. Let it shine!

## Powerful



This Philips Thermoprotect hairdryer creates 2300W for a fast and powerful airflow. The resulting combination of power and speed makes drying and styling your hair quicker and easier.

## ThermoProtect anti overheating



The ThermoProtect temperature setting provides the optimal drying temperature and gives additional protection from overheating

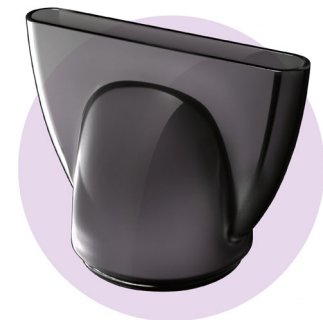
the hair. With the same powerful airflow, you will get the best results in a caring way.

## Accurate control



The speed and heat required can be easily adjusted to create the perfect style. Six different settings ensure full control for precise and tailored styling.

## 11mm ultra narrow concentrator



Perfect styling results and a shiny, polished look with a ultra narrow concentrator for precise styling.

## Volume and curls



The diffuser has a unique asymmetric design that is contoured to the head, making it easier and more intuitive to use. The diffuser spreads the flow of air across the hair, drying hair more

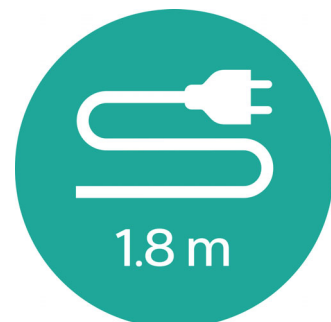
healthy, boosting volume and reducing frizz while the addition of massage helps stimulate the scalp and improve hair vitality.

## Cool Shot



A must-have professional function for hair stylists. The Cool Shot button provides an intense burst of cold air. It is used after styling to finish and set the style.

## 1.8m cord



Convenient to use thanks to the 1.8m power cord length.

## Easy storage hook



A rubberized hook can be found on the base of the handle. Use to store easily at home or if staying at a hotel.

# Specifications

## Features

- Ceramic coating: No
- Cool shot
- Diffuser
- Dual voltage: No
- Foldable handle: No
- Hanging loop
- Ion conditioning
- Nozzle / Concentrator
- Number of attachments: 2
- Travel Pouch included: No

## Service

- 2-year guarantee

## Technical specifications

- Color/finishing: Matt black
- Cord length: 1.8 m
- Frequency: 50-60 Hz
- Motor: DC Motor
- Power: 2300 W
- Voltage: 220-240 V
- Wattage: 2300 W



Issue date 2018-03-28

Version: 3.4.1

© 2018 Koninklijke Philips N.V.  
All Rights reserved.

Specifications are subject to change without notice.  
Trademarks are the property of Koninklijke Philips N.V.  
or their respective owners.

[www.philips.com](http://www.philips.com)