

Quick Start Guide



1

2

Register your product and get support at www.philips.com/support

1

2

1

2

3

1

2

3

4

5



Specifications are subject to change without notice. This product has been manufactured by, and is sold under the responsibility of MMD Hong Kong Holding Limited., and MMD Hong Kong Holding Limited. is the warrantor in relation to this product. Philips and the Philips Shield Emblem are registered trademarks of Koninklijke Philips N.V. and are used under license.

TAM2505_10_QSG_V1.0



zzz

1

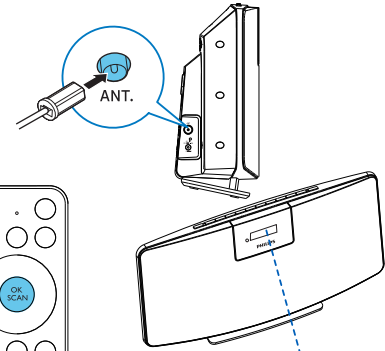
2

1

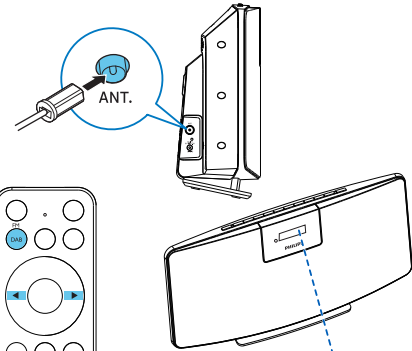
2

1

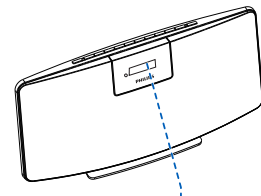
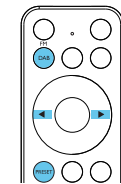
2



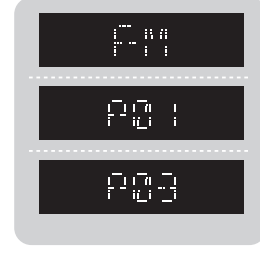
- 1 FM DAB
- 2 OK SCAN



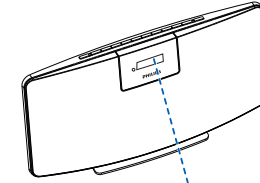
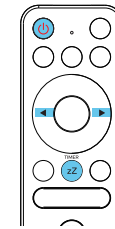
- 1 FM DAB
- 2 A </>
- 2 B </>



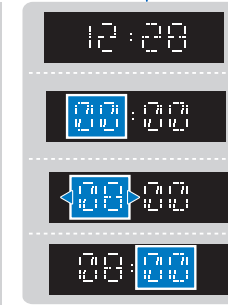
- 1 FM DAB
- 2 PRESET
- 3 </>
- 4 PRESET



- 2 B </>
- 95.20
- 101.05



- 1 timer set
- 2 TIMER zZ
- 3 </>
- 4 TIMER zZ



- 5 </>
- 6 TIMER zZ select source
- 7 </>
- 8 TIMER zZ
- 9 </>
- 10 TIMER zZ

