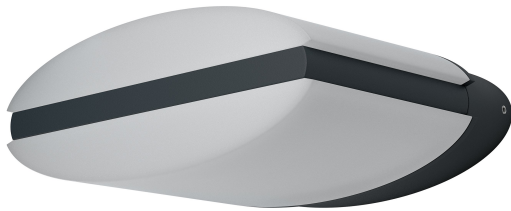


PRODUCT DATASHEET

ENDURA STYLE Ellipse 13 W DG

ENDURA® STYLE ELLIPSE | Decorative and very bright luminaires



Areas of application

- Outdoor use (IP44)
- Gardens, balconies and other outdoor areas
- Building facades
- Pathway lighting
- Driveways

Product benefits

- Energy-efficient thanks to LED technology
- Easy and quick installation

Product features

- Very bright and functional outdoor LED luminaires
- Die-cast aluminum housing
- Available as wall and bollard luminaires



TECHNICAL DATA**Electrical data**

| | |
|------------------------|---------------|
| Nominal wattage | 12.50 W |
| Nominal voltage | 220...240 V |
| Mains frequency | 50...60 Hz |
| Nominal current | 103 mA |
| Power factor λ | > 0.5 |
| Protection class | I |
| Operating mode | Mains voltage |

Photometrical data

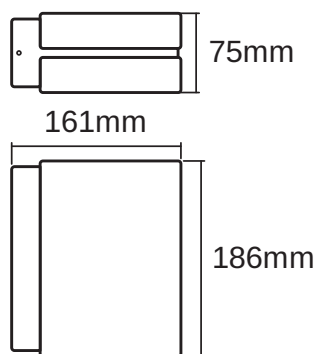
| | |
|--------------------------------------|---------------------------|
| Luminous flux | 890 lm |
| Luminous efficacy | 71 lm/W |
| Color temperature | 3000 K |
| Light color (designation) | Warm White |
| Standard deviation of color matching | ≤ 6 sdc _m |
| Color rendering index Ra | > 80 |
| Beam angle | 122 ° |

UV & Air cleaning

| | |
|-----------------|--------|
| Mercury content | 0.0 mg |
|-----------------|--------|

Dimensions & weight

| | |
|----------------|-----------|
| Length | 161.00 mm |
| Width | 186.00 mm |
| Height | 75.00 mm |
| Product weight | 1000.00 g |



Materials & Colors

| | |
|----------------|--------------------|
| Product color | Dark gray |
| Housing color | Dark gray |
| Body material | Aluminum |
| Cover material | Polycarbonate (PC) |

Application & Mounting

| | |
|------------------------------|-----------------|
| Ambient temperature range | -20...+40 °C |
| Temperature range at storage | -20...+85 °C |
| Type of connection | Screw terminal |
| Type of protection | IP44 |
| Dimmable | No |
| Mounting type | Surface |
| Mounting location | Wall |
| LED module replaceable | Not replaceable |

Lifespan

| | |
|----------------------------|-------|
| Number of switching cycles | 15000 |
|----------------------------|-------|

Certificates & standards

| | |
|-----------|-------------------------|
| Standards | CE / EAC / REACH / RoHS |
|-----------|-------------------------|




Logistic

| | |
|------------------------------|--------------|
| Temperature range at storage | -20...+85 °C |
|------------------------------|--------------|

EQUIPMENT / ACCESSORIES

– Complete mounting and connecting accessories included

DOWNLOAD DATA

| DOWNLOAD DATA | |
|---|---|
|  | User instruction ENDURA® STYLE ELLIPSE 13 W DG |
|  | Tender documents Tender Text 4058075205079 |
|  | Packaging insert Legal insert C Outdoor - Not dimmable |

LOGISTICAL DATA

| Product code | Packaging unit (Pieces/Unit) | Dimensions (length x width x height) | Gross weight | Volume |
|---------------|------------------------------|--------------------------------------|--------------|-----------------------|
| 4058075205079 | Folding box 1 | 188 mm x 227 mm x 95 mm | 1050.00 g | 4.05 dm ³ |
| 4058075205086 | Shipping box 4 | 390 mm x 240 mm x 210 mm | 4414.00 g | 19.66 dm ³ |

The mentioned product code describes the smallest quantity unit which can be ordered. One shipping unit can contain one or more single products. When placing an order, for the quantity please enter single or multiples of a shipping unit.

DISCLAIMER

Subject to change without notice. Errors and omission excepted. Always make sure to use the most recent release.