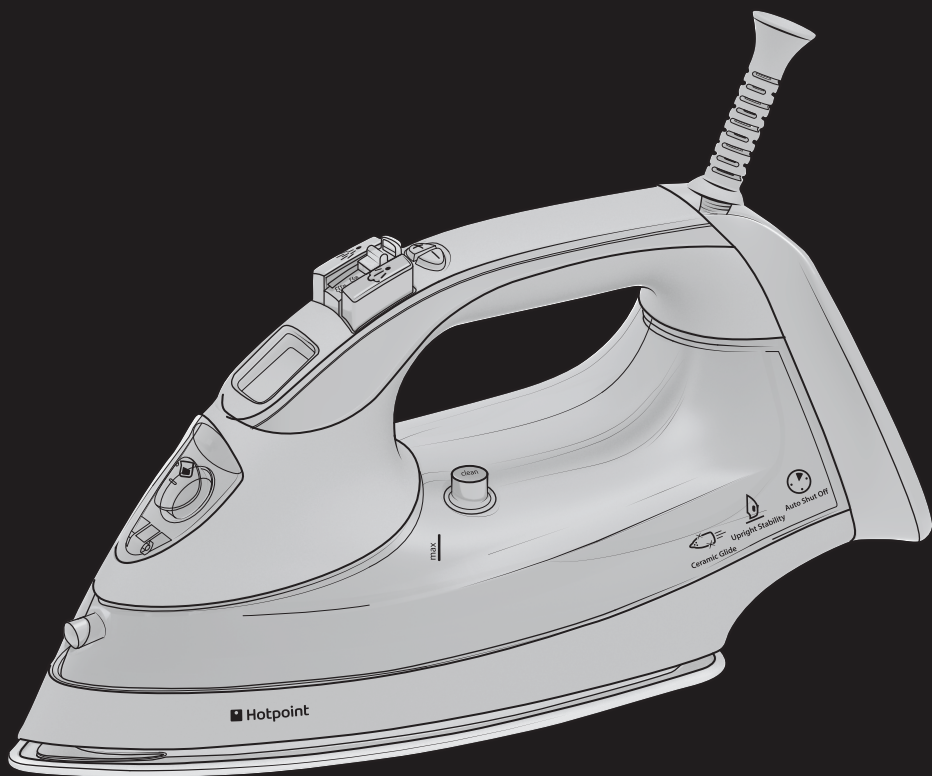




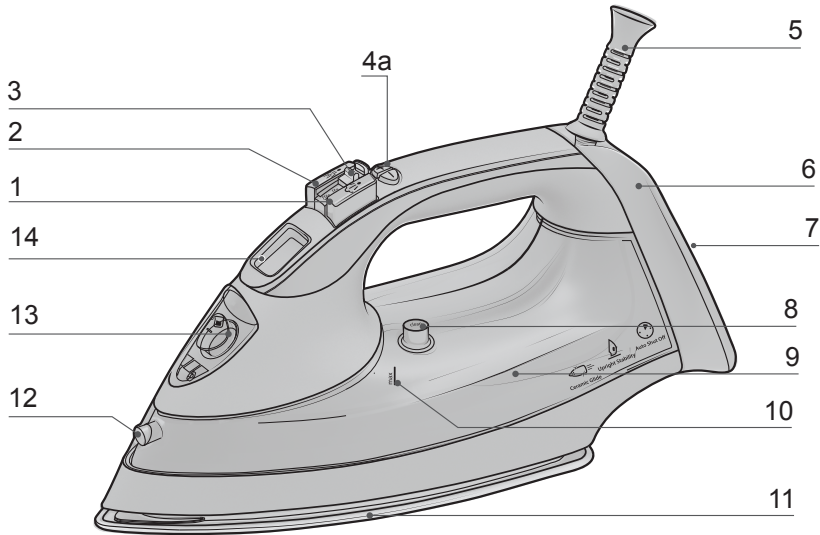
 **Hotpoint**



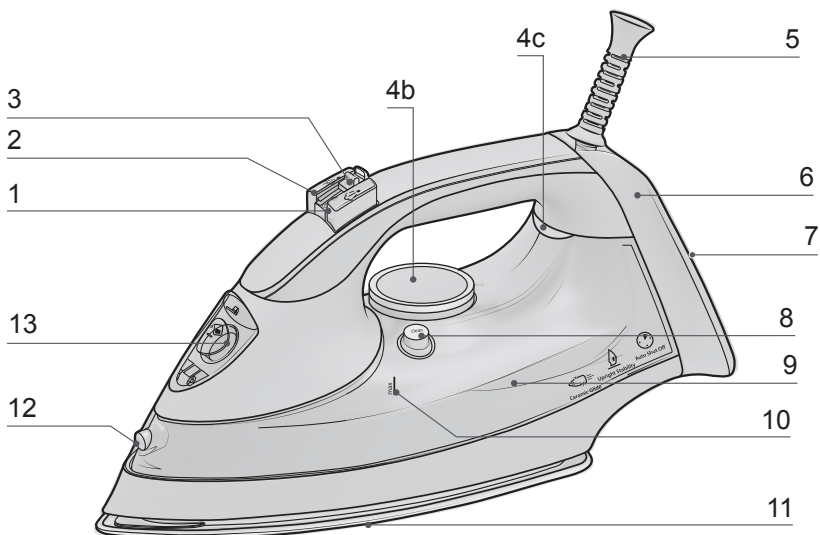
EN Operating Instructions

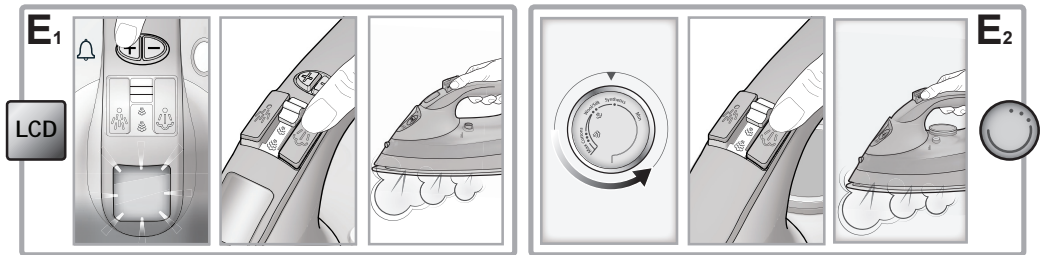
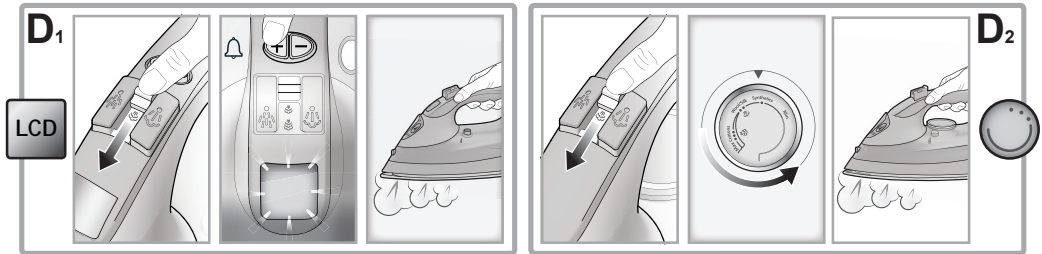
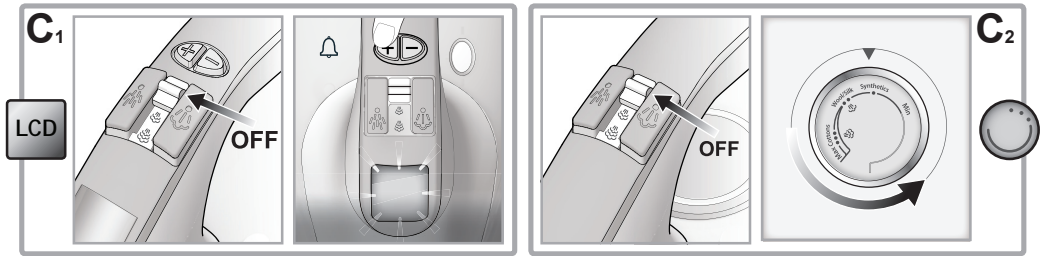
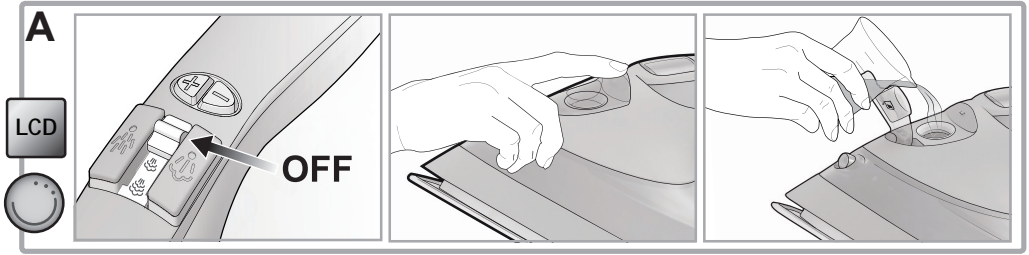
LCD

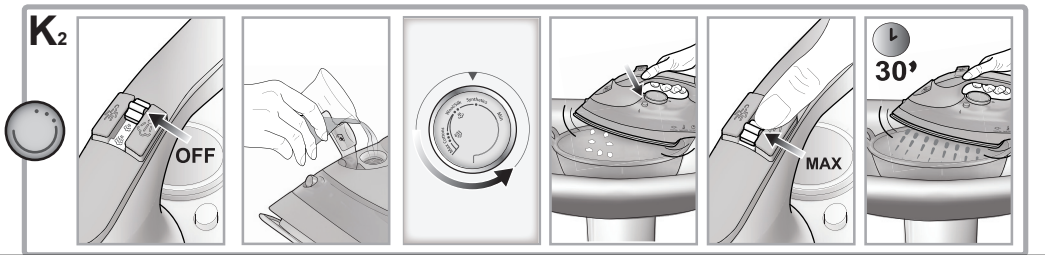
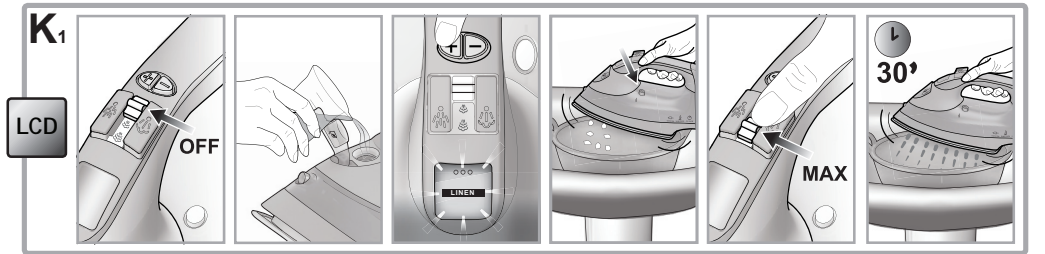
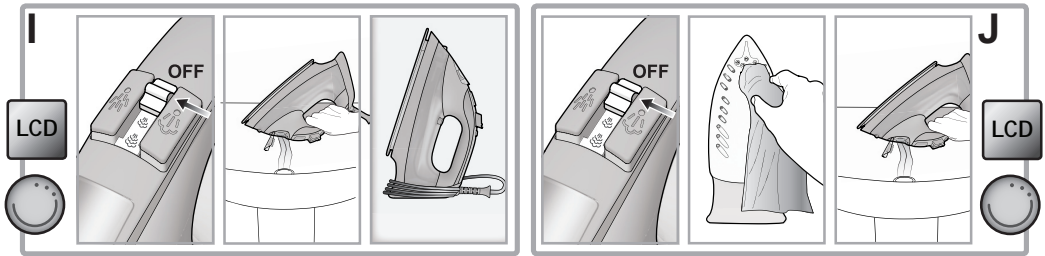
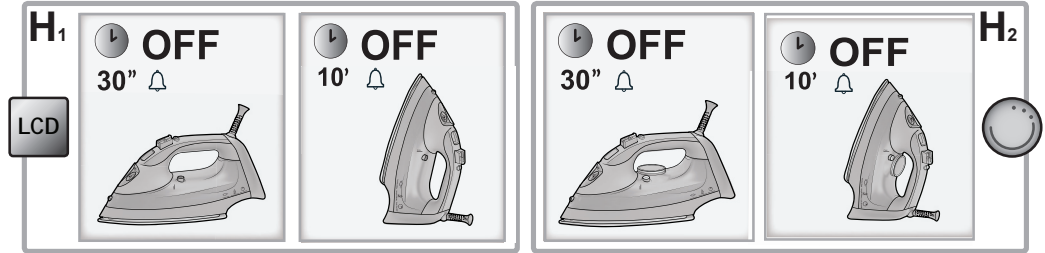
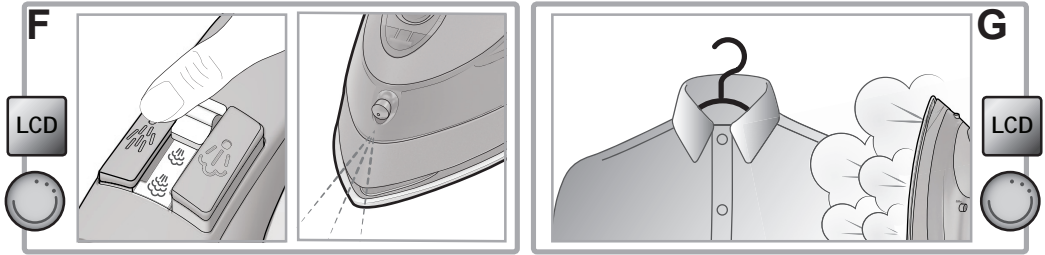
SI E40 BA1 UK



SI DC30 BA1 UK







GENERAL SAFETY RULES

- Do not operate the iron in case of damaged plug, power cord or appliance, or in the presence of visible damage or water leaks from the appliance. In such a case the appliance must be inspected by the Hotpoint authorized technical staff in order to avoid dangerous situations.
- If the appliance was dropped, do not operate it.
- The appliance is not intended to be used by individuals (children included up to 8 years of age) with impaired physical, sensory or mental capabilities, inexperienced individuals or individuals who are not familiar with the product, unless they are supervised by a person responsible for their safety, or by individuals who have not received preliminary instructions on the use of the appliance.
- Supervise children to prevent them from playing with the appliance.
- Never leave the appliance unattended when the plug is connected into the electrical socket.
- After each use of the appliance, when filling and emptying the water reservoir, as well as when cleaning the appliance, set the steam regulator to Off. Then place the appliance in a stable position, using the stand, and disconnect the plug from the electrical socket.
- The appliance must be used and placed on a stable, flat horizontal surface. The use on an ironing board is recommended.

- For your safety, all repairs or maintenance operations must be carried out exclusively by the Hotpoint authorised technical staff.
- Keep the iron and its cord out of reach of children less than 8 years of age when it is energized or cooling down.
- Cleaning and user maintenance shall not be made by children without supervision.
- When placing the iron on its stand, ensure that the surface on which the stand is placed is stable.
- The plug must be removed from the socket-outlet before the water reservoir is filled with water.
- This steam iron is equipped with the safety device Power off system. When the plug has been connected, move the iron to switch it on.

DESCRIPTION OF YOUR IRON


1. Shot of steam button
2. Spray button
3. Steam regulator
- 4a. Temperature buttons +/-
- 4b. Temperature control
- 4c. Temperature indicator light
5. Power cable holder
6. Cable winder
7. Stand
8. Auto-Clean button
9. Water reservoir
10. Maximum water level
11. Soleplate
12. Spray nozzle
13. Filler hole Lid
14. LCD

Not shown: water measurer

INTRODUCTION


Thank you for purchasing our Quick Perfection steam iron. In doing so, you have opted for an effective high-performance appliance. We advise you to register this product online at www.hotpoint.co.uk to make sure you are entitled to all benefits made available by Hotpoint's Customer Service.

This appliance has been exclusively designed for domestic use and is not intended for industrial use.

 **Before using the appliance, carefully read the instructions and keep them with care for future use.**


GENERAL SAFETY RULES

The safety of your steam iron complies with the technical specifications and standards in force.


 **The voltage of your electrical mains must correspond to the voltage of the steam iron (220-240 V). Improper connection may result in irreversible damage for the appliance, voiding its warranty.**

- Use the appliance only for its intended use as described in this manual.
- This product is intended only for ironing of clothing and household laundry.

- This appliance must be exclusively connected to a grounded socket. When using an extension cord, make sure that a grounded socket is available.
- Inspect the conditions of the power cord on a regular basis.
- Do not fill the water reservoir by holding the appliance directly under the tap. Always use the water measurer supplied with the appliance.
- Make sure you have disconnected the plug from the electrical socket before filling and emptying the water reservoir and in any case after each use.
- Disconnect the plug from the socket by holding the plug, and not by pulling the cable.
- Avoid contact between the power cord and the iron plate when hot.
- Do not wind the power cord around the plate when hot. Use the cord, instead.


 **The iron, water and steam coming out of the plate are extremely hot and can burn the skin.**

- Before storing the appliance, wait until it has cooled down completely (a steam iron takes about one hour to cool down). Use the handle to store the appliance after use.
- Do not direct the steam towards people or animals and do not iron garments while worn.
- After use, store the appliance in a stable position, using the stand on the back of the iron.
- Never add any perfume, vinegar, starch, scale-removing agents, ironing products or other chemicals in the water reservoir - unless recommended by Hotpoint. Never use contaminated water.
- Never immerse the appliance in water or in any other liquid.
- The appliance must not be left outdoor and exposed to weather agents.
- Never leave or use the appliance in the proximity of flames, ovens, flammable materials or other heat sources.
- Never use the appliance for any purposes other than the ones for which it has been designed.
- In case of suspected damage, immediately disconnect the plug from the electrical socket.
- The manufacturer assumes no responsibility in case of damage resulting from the improper use of the appliance.

 **This appliance must be earthed. The following operations should be carried out by a qualified electrician.**


Before filling the iron with water, make sure that the iron is switched-off and disconnected from the electrical socket.

1. Set the steam regulator (3) to Off.
2. Tilt the iron in such a position to make water entrance easier.
3. Open the lid of the filler hole (13) and fill the water reservoir using the water measurer supplied with the iron. Never fill the water reservoir above the maximum water level (10).
4. Close the lid of the filling hole.

 **Never add any perfume, vinegar, starch, scale-removing agents, ironing products or other chemicals in the water reservoir - unless recommended by Hotpoint. Never use contaminated water.**

USING THE IRON

In order to make reading this instructions manual easier and identify the model of your Quick Perfect iron, refer to the graphics on page II.


 **Your iron is supplied with Power Off System safety device which automatically switches the iron off when it is left unattended or tips over and ensures maximum safety.**









Selecting the temperature and adjusting the steam (B₁)



1. Connect the plug of the appliance into a grounded socket (220/240V).
2. The LCD (14) lights up in red and starts flashing to indicate that the iron is reaching the set temperature.
3. Use the temperature buttons +/- (4a) to select the desired temperature. Every time you press one of the two buttons, the display lights up and starts flashing to indicate that the steam iron is reaching the selected temperature.
4. When the iron reaches the set temperature, the LCD lights up in green and the set temperature is shown in fixed mode to indicate that the iron is ready for use.
5. Make sure to check the garment label in order to identify the fabric type. In case of doubts, it is recommended not to use the spray function and iron a hidden corner in order to determine the most appropriate temperature and avoid damaging the fabric. In case of very delicate fabrics, such as silk, wool, and synthetic materials, iron the garment inside out to prevent

shiny marks. Start ironing the garments that require a lower temperature, such as synthetic fabrics.

 **Fabrics with this symbol on the label must not be ironed.**


GARMENT LABEL	FABRIC TYPE	TEMPERATURE INDICATION	STEAM INDICATION
	synthetic	○ ● ○	Off
	silk mixed cotton	● ● ○	Off
	wool mixed wool	○ ○ ○	
	cotton	● ● ●	
	linen jeans	○ ○ ○	










6. Select the steam level with the steam regulator (3) or move it to Off to iron without steam. When steam ironing, make sure that the water level in the reservoir is at least ¼.

Selecting the temperature and adjusting the steam (B₂)



1. Connect the plug of the appliance into a grounded socket (220/240V).
2. Use the temperature control (4b) to select the desired temperature. If you go from a lower temperature to a higher temperature, the temperature indicator light (4c) light up until the selected temperature is reached.
3. When the iron reaches the set temperature, an acoustic signal is emitted and the temperature indicator light goes off.
4. We recommend to check the garment label in order to identify the fabric type. In case of doubts, it is recommended not to use the spray function and iron a hidden corner in order to determine the most appropriate temperature and avoid damaging the fabric. In case of very delicate fabrics, such as silk, wool, and synthetic materials, iron the garment inside out to prevent shiny marks. Start ironing the garments that require a lower temperature, such as synthetic fabrics.


 **Fabrics with this symbol on the label must not be ironed.**

GARMENT LABEL	FABRIC TYPE	TEMPERATURE INDICATION	STEAM INDICATION
	synthetic		Off
	silk mixed cotton		Off
	wool mixed wool		
	cotton		
	linen jeans		

- Select the steam level with the steam regulator (3) or move it to Off to iron without steam. When steam ironing, make sure that the water level in the reservoir is at least $\frac{1}{4}$.

USE



 When switching on the iron for the first time, you may notice an unpleasant odour, a little smoke and some impurities from the manufacturing process that will disappear in a few minutes.

Ironing without steam (C₁)

- Set the steam regulator (3) to Off (=no steam).
- Select the recommended ironing temperature with the temperature buttons +/- (4a) (see step B₁ and chapter "Using the iron", section "Selecting the temperature and adjusting the steam").

Steam ironing (D₁)

- Check that the water level in the reservoir is higher than $\frac{1}{4}$.
- Select the appropriate steam with the steam regulator (3) and the recommended ironing temperature with the temperature buttons +/- (4a) (see step B₁ and chapter "Using the iron", section "Selecting the temperature and adjusting the steam").


 **The iron starts producing steam as soon as it reaches the set temperature.**

Ironing with shot of steam (E₁)

The shot of steam function allows you to eliminate persistent wrinkles. You can use this function both in


no-steam and steam ironing mode.

- Check that the water level in the reservoir is higher than $\frac{1}{4}$.
- Select the recommended ironing temperature with the temperature buttons +/- (4a) (see step B₁ and chapter "Using the iron", section "Selecting the temperature and adjusting the steam").
- Press the shot of steam button (1) to obtain an extra steam flow when ironing. If the shot of steam function has not been used for some time, it may be necessary to press the button repeatedly to activate the pump.

 **If the water in the reservoir is finished, it may be necessary to press the shot of steam button several times to (re)activate the pump, after filling the water reservoir again.**

USE



 When switching on the iron for the first time, you may notice an unpleasant odour, a little smoke and some impurities from the manufacturing process that will disappear in a few minutes.

Ironing without steam (C₂)

- Set the steam regulator (3) to Off (=no steam).
- Select the recommended ironing temperature with the temperature control (4b) (see step B₂ and chapter "Using the iron", section "Selecting the temperature and adjusting the steam").

Steam ironing (D₂)

- Check that the water level in the reservoir is higher than $\frac{1}{4}$.
- Select the appropriate steam with the steam regulator (3) and the recommended ironing temperature with the temperature selector (4b) (see step B₂ and chapter "Using the iron", section "Selecting the temperature and adjusting the steam").

 **The iron starts producing steam as soon as it reaches the set temperature.**


Ironing with shot of steam (E₂)

The shot of steam function allows you to eliminate persistent wrinkles. You can use this function both in no-steam and steam ironing mode.

- Check that the water level in the reservoir is higher than $\frac{1}{4}$.
- Select the recommended ironing temperature with the temperature control (4b) (see step B₂

and chapter “Using the iron”, section “Selecting the temperature and adjusting the steam”).

3. Press the shot of steam button (1) to obtain an extra steam flow when ironing. If the shot of steam function has not been used for some time, it may be necessary to press the button repeatedly to activate the pump.

 **If the water in the reservoir is finished, it may be necessary to press the shot of steam button several times to (re)activate the pump, after filling the water reservoir again.**

FEATURES


Spray function (F)

The spray function is used to dampen the garment in order to remove persistent wrinkles easily. You can use the spray function both in no-steam and steam ironing mode at any temperature.

1. Check that the water level in the reservoir is higher than $\frac{1}{4}$.
2. With the iron in horizontal position, press the spray button (2) to dampen the garment.


Vertical steam function (G)

The vertical steam function is useful to eliminate wrinkles from hanging garments, curtains, etc. You can use this function by simply placing the iron in vertical position. All functions of the appliance will remain unchanged also in this position (refer to chapter “Use” according to the model).

 **Do not direct steam towards people or animals and do not iron garments while worn.**

Anti-drip function

The iron is provided with anti-drip function in order to automatically interrupt the steam distribution when the temperature is too low, thus preventing water dripping out of the soleplate.

 **Do not use steam with low temperatures (see chart in step B₁ and B₂, chapter “Using the iron”, according to the type of iron you are using).**

Automatic Stand-By function (H₁)



The automatic stand-by function guarantees total safety.

This function automatically switches off the iron when it is not used for a few minutes. In particular:

- the iron switches off automatically after 30 seconds when left unattended in the ironing position or sideways;
- the iron switches off automatically after 10 minutes when left unattended in the rest position (vertical).

If you leave the iron unattended, the display flashes a green light and an acoustic signal is emitted to inform that the automatic stand-by function is active.

Simply move the iron or press the temperature buttons +/- (4a) to switch it back on.

 **Wait until the display becomes green before starting ironing again.**

Automatic switch-off function (H₂)



The automatic switch-off function guarantees total safety.

This function automatically switches off the iron when it is not used for a few minutes. In particular:

- the iron switches off automatically after 30 seconds when left unattended in the ironing position or sideways;
- the iron switches off automatically after 10 minutes when left unattended in the rest position (vertical).

If you leave the iron unattended an acoustic signal is emitted to inform that the automatic switch-off function is active.

Simply move the iron to switch it back on.

 **Wait until the temperature indicator light turns off before starting ironing again.**


CLEANING AND MAINTENANCE

After use (I)


1. Set the steam regulator (3) to Off, disconnect the appliance plug from the electrical socket and let the iron cool down.
2. Empty the water reservoir (9).
3. Wind the cord around the cable winder (6) and store the iron in vertical position, in a dry safe place.

 **Never store the iron in horizontal position. Always use the stand at the back of the iron.**

Cleaning (J)

 **Never use aggressive and/or abrasive substances to clean the plastic parts and the iron soleplate.**

1. Set the steam regulator (3) to Off, disconnect the appliance plug from the electrical socket and let the iron cool down.
2. Use a dry or slightly dampened soft cloth to clean the upper part of the iron.
3. For the ordinary cleaning and/or removal of stains or other residues deposited on the plate, clean with a dampened soft cloth and dry.
4. Use a dampened cotton tip to eliminate scale in the steam holes that may impair the performance of your iron.


 **In order to keep the soleplate perfectly smooth and polished, avoid contacts with metal objects, do not iron sharp objects, such as buttons, studs and hinges in order to avoid scratching the plate.**

5. Regularly rinse the reservoir with clean water. After cleaning, always empty the water reservoir.


Auto-Clean Function (K₁)

 LCD

If you have been using water from the tap, we recommend starting the Auto-Clean function after ironing every time.


 **The use of the Auto-Clean function should not be deemed the same as using demineralised water on a regular basis.**

1. Check that the appliance is disconnected from the electrical socket and the steam regulator is (3) set to Off.
2. Fill the water reservoir (9) up to the maximum water level (10).


 **Never add any perfume, vinegar, starch, scale-removing agents, ironing products or other chemicals in the water reservoir - unless recommended by Hotpoint. Never use contaminated water.**

3. Connect the plug of the appliance into a grounded socket (220/240V).
4. Set the temperature to the maximum value with the temperature buttons +/- (4a).
5. Wait at least 2 or 3 minutes to warm the iron completely.
6. Holding the iron above the sink or a container

made of resistant material, press the Auto-Clean button (8) and shake gently.

 **Steam and boiling water will come out of the soleplate with scale residues and other impurities. Never use plastic containers for collection.**


7. Switch off the iron and disconnect it from the electrical socket.
8. Set the steam select to the maximum position.
9. Allow water to come out of the holes for at least 30 minutes.
10. Slide the iron gently on a cloth to eliminate any stains from the soleplate.
11. Before using the iron again, press the shot of steam button (1) repeatedly to eliminate any scale residues.

 **When making this operation, keep the iron away from the garments in order not to stain them.**


Auto-Clean Function (K₂)



If you have been using water from the tap, we recommend starting the Auto-Clean function after ironing every time.

 **The use of the Auto-Clean function should not be deemed the same as using demineralised water on a regular basis.**

1. Check that the appliance is disconnected from the electrical socket and the steam regulator is (3) set to Off.
2. Fill the water reservoir (9) up to the maximum water level (10).


 **Never add any perfume, vinegar, starch, scale-removing agents, ironing products or other chemicals in the water reservoir - unless recommended by Hotpoint. Never use contaminated water.**

3. Connect the plug of the appliance into a grounded socket (220/240V).
4. Set the temperature to the maximum value with the temperature control (4b).
5. Wait at least 2 or 3 minutes to warm the iron completely.
6. Holding the iron above the sink or a container made of resistant material, press the Auto-Clean button (8) and shake gently.

 **Steam and boiling water will come out of the soleplate with scale residues and other**

impurities. Never use plastic containers for collection.

7. Switch off the iron and disconnect it from the electrical socket.
8. Set the steam select to the maximum position.
9. Allow water to come out of the holes for at least 30 minutes.
10. Slide the iron gently on a cloth to eliminate any stains from the soleplate.
11. Before using the iron again, press the shot of steam button (1) repeatedly to eliminate any scale residues.

 **When making this operation, keep the iron away from the garments in order not to stain them.**

TIPS

- Sort the garments out according to the fabric type. This will reduce the need to adjust the temperature according to the different fabrics.
- Start with the garments that require a lower ironing temperature and continue with the garments with gradually higher ironing temperature.
- If you are not sure about the composition of the fabric, try ironing a hidden corner, such as a seam, hem or internal section. Start with a low temperature and gradually increase the temperature in order to find the ideal ironing setting.
- When you reduce the ironing temperature to iron delicate garments, wait approximately 2 minutes to let the iron reach the new settings.
- Pure wool (100% wool) garments can be ironed as long as the temperature is set to wool. It is recommended to use a cotton cloth to prevent any shiny residues on the garment.
- Never iron areas with evident perspiration marks: the heat will fix the stains and make them permanent.

GUARANTEE

**12 months Standard Guarantee
Enhanced to 2 years upon product registration**

This certificate of guarantee represents the guarantee ("Guarantee" hereinafter) offered by Indesit Company UK Limited with registered office at Peterborough PE2 9JB in relation to products purchased in the United Kingdom and Indesit Ireland Limited with registered office in Dublin 9, Ireland for products purchased in the Republic of Ireland. This Guarantee does not affect your statutory rights.

Your product has the benefit of our manufacturer's Guarantee, which covers the product for twelve months from the date of purchase.

This gives you the reassurance that if, within that time, your product is proven to be defective because of either workmanship or materials, we will, at our discretion, either repair or replace the product at no cost to you.

This Guarantee is subject to the following conditions:

- Documentary proof of original purchase date is provided.
- Cosmetic damage must be reported within 14 days from the date of purchase.
- The product has been installed and operated correctly and in accordance with our operating and maintenance instructions.
- The product is used only on the electricity supply printed on the rating plate.
- The product has been used for normal domestic purposes only.
- The product has not been altered, serviced, maintained, dismantled, or otherwise interfered with by any person not authorised by us.
- Any repair work must be undertaken by us or our appointed agent.
- Any parts removed during repair work or any product that is replaced become our property.
- The product is used in the United Kingdom or Republic of Ireland.

The Guarantee does not cover:

- Damage resulting from transportation, improper use, neglect or interference or as a result of improper installation.
- Accidental damage, this includes but is not limited to, damage which occurs as a result of an external action.
- Replacement of any consumable item or accessory. These include but are not limited to:
 - plugs, cables, light bulbs, hoses, brushes, covers and filters.
 - Replacement of any removable parts made of glass or plastic.

After Sales Service

No one is better placed to care for your Hotpoint product during the course of its working life than us – the manufacturer.

Essential Contact Information Advice Line

We have a dedicated team who can provide free advice and assistance with your product if you experience any technical difficulties. Simply call our Hotpoint Service Hotline for telephone assistance.

UK: 03448 240 055

Republic of Ireland 0818 904 041

www.hotpointservice.co.uk

Please note:

Our advisors will require the following information:

Model number:

Serial number:

Consumables and Accessories

We supply a full range of consumables and accessories to keep your product functioning efficiently throughout its life.

UK: 03448 225 225

Republic of Ireland: 0818 313 413

parts.hotpoint.co.uk/shop

Recycling and Disposal Information

As part of Hotpoint's continued commitment to helping the environment, Hotpoint reserves the right to use quality, recycled components to keep down customer costs and minimise material wastage.

Please dispose of packaging and old products carefully.

Register your new product and receive 1 additional year FREE!

As an additional benefit of owning your Hotpoint product, we are offering 1 years additional free guarantee. To be eligible for this you will need to contact us to register your product within 28 days of purchase. If you do not register your appliance within the 28 days you will still be entitled to 1 years manufacturer's guarantee. To activate your 2 year guarantee register online at www.hotpoint.co.uk. Please note that the extended

guarantee is only available in the UK and Ireland and is subject to the same terms and conditions as the 1 year guarantee. Please refer to the certificate of guarantee for more information.

DISPOSAL OF OLD ELECTRICAL APPLIANCES



The European Directive 2012/19/UE on Waste Electrical and Electronic Equipment (WEEE), requires that old household electrical appliances must not be disposed of in the normal unsorted municipal waste stream.

Old appliances must be collected separately in order to optimise the recovery and recycling of the materials they contain and reduce the impact on human health and the environment.



The crossed out "wheeled bin" symbol on the product reminds you of your obligation, that when you dispose of the appliance it must be separately collected. Consumers should contact their local authority or retailer for information concerning the correct disposal of their old appliance.

TROUBLESHOOTING

Problem

The soleplate remains cold and does not warm up.

The temperature indicator light turns on and off.

Steam comes out in reduced quantity or does not come out.

Impurities come out from the soleplate and stain the garments.

Possible cause / Solutions

- The plug may not be inserted into the electrical socket, or it may not make contact.
- Check that the temperature is not set to MIN.
- The temperature indicator light turns on to indicate that the iron is getting hot. The indicator light turns off when the set temperature is reached.
- The steam regulator is set to Off.
- Not enough water in the water reservoir. Fill the water reservoir.
- The iron is not sufficiently hot and/or the anti-drip function is active. Replace the iron in vertical position, using the stand, and wait until the temperature indicator light turns off or the LCD becomes red before starting to iron.
- The plate temperature may be too low due to the excessively frequent activation of the shot of steam button. Slightly increase the interval between steam shots.
- There may be residues in the vaporisation chamber. Make the cleaning operations (see chapter "Cleaning and maintenance", section "Auto-Clean Function" according to the model).
- You are using perfume, vinegar, starch, vinegar, starch, scale-removing agents, ironing products or other chemical substances. Remember that these substances may damage the product. Rinse the water reservoir.
- You are using starch. You can use starch directly on the inside out of the fabrics and in any case never in the water reservoir.
- The garment was not washed correctly or has some soap residues.
- You are ironing a new garment that was not washed for the first time.

Water is dripping out of the soleplate

- The soleplate temperature may be too low due to the excessively frequent activation of the shot of steam button. Slightly increase the interval between steam shots.
- The soleplate temperature is set to a too-low temperature.
- You have replaced the iron horizontally without emptying it and/or without setting the steam regulator to Off.
- You did not close the lid of the filler hole correctly.
- You have used the shot of steam function with a too-low temperature. We recommend to use these functions with temperatures higher than ● ● ●.
- You are using perfume, vinegar, starch, vinegar, starch, scale-removing agents, ironing products or other chemical substances. Remember that these substances may damage the product. Rinse the water reservoir.

The soleplate is dirty or dark and may stain the fabrics.

- You are using a too-high temperature. Clean the soleplate (see chapter "Cleaning and maintenance", section "Cleaning").
- You are using starch. You can use starch directly on the inside out of the fabrics and in any case never in the water reservoir.
- The garment was not washed correctly or has some soap residues.
- You are ironing a new garment that was not washed for the first time.

The spray function does not work.

- Not enough water in the water reservoir. Fill the water reservoir.



Indesit Company UK Ltd
Morley Way,
Peterborough PE2 9JB

www.indesitcompany.com

Quick Perfection
2015/03 ver. 2.1.