



EN ■ Electric Spiralizer

READ CAREFULLY AND STORE FOR FUTURE USE.

- This appliance may be used by persons with physical or mental impairments or by inexperienced persons, if they are properly supervised or have been informed about how to use the appliance in a safe manner and understand the potential dangers.
- Children must not use this appliance or play with it. Keep this appliance and the power cord out of reach of children.
- This appliance is used to process fruit and vegetables and is also designed for domestic use and similar locations such as:
 - staff kitchens in stores, offices and other workplaces;
 - agricultural farms;
 - hotel or motel rooms and other living areas;
 - bed and breakfast establishments.
- Do not use the appliance for commercial purposes, in industrial surroundings or outdoors.
- Do not place the appliance on window sills or on unstable surfaces. Do not place it on an electric or gas stove, in the vicinity of an open flame or appliances that are sources of heat.
- Never use accessories, which have not been supplied with this appliance or which have not been explicitly recommended by the manufacturer for this appliance.
- Before connecting this appliance to a power socket, make sure the rated voltage stated on its rating label corresponds to the voltage in your power socket.
- Prior to changing accessories that move during use, make sure that the appliance is turned off and disconnected from the power socket, and that rotating parts have stopped.
- When handling the cutting blades, especially when removing them from the holder and when cleaning, take special care to avoid injury on their sharp edges.
- Make sure that the appliance is correctly assembled before putting it into operation. The appliance is equipped with a double safety mechanism that prevents it from being started when not correctly assembled and when the jug is not correctly installed.
- Ensure that foreign items such as clothing, hair, kitchen utensils, etc. do not enter the feed tube during operation. Otherwise, an injury could occur or the appliance could be damaged.
- Use the supplied pusher to push the fruit and vegetables through the feed tube. Never use your hands or other items. Before using the pusher, check that it is properly assembled.



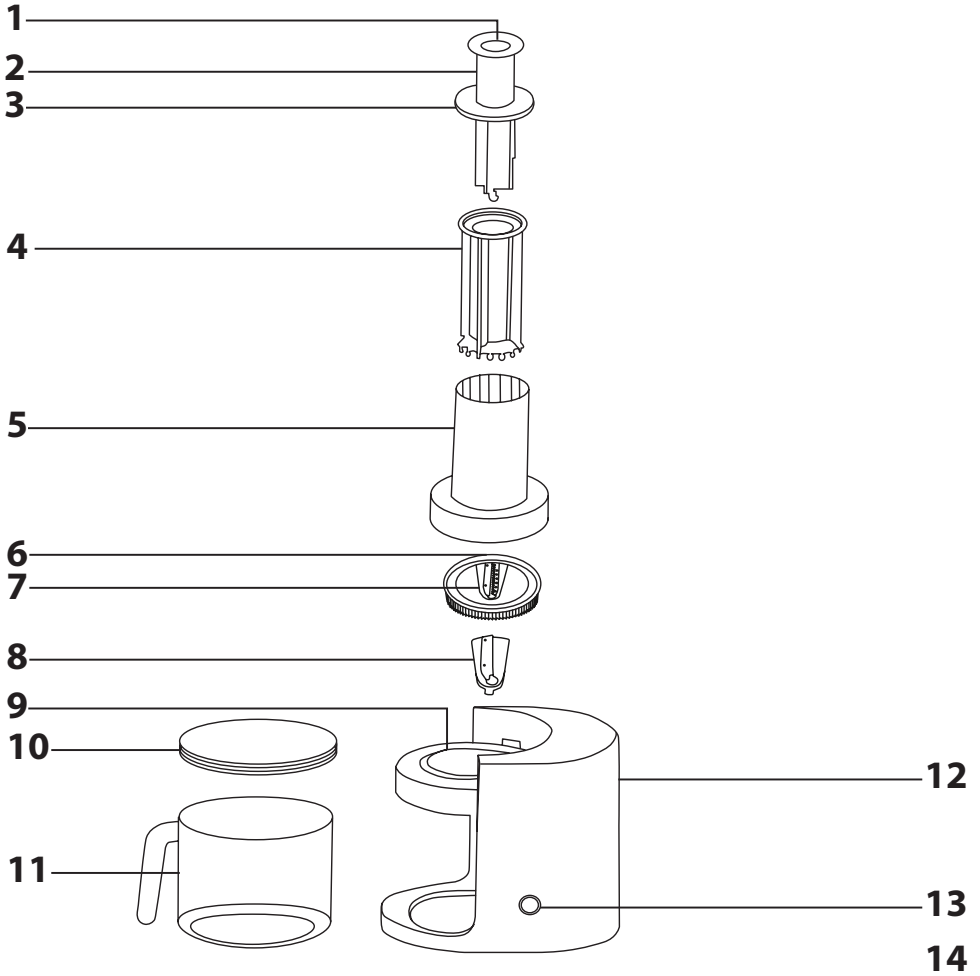
Warning:

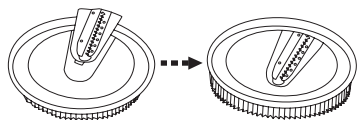
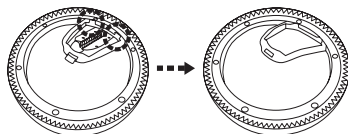
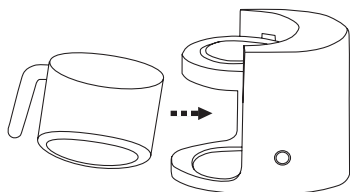
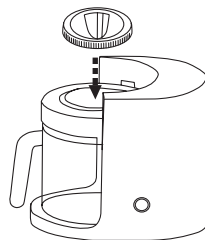
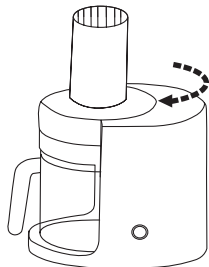
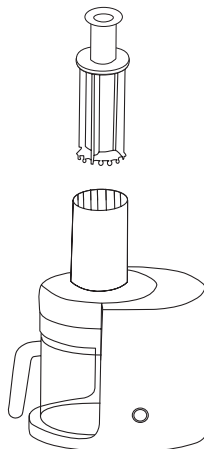
Incorrect use may lead to injuries.

- The appliance must not run empty. The incorrect use of the appliance may negatively affect its lifetime.
- The maximum operating time is 1 minute. Before turning it on again, allow it to cool down for at least 5 minutes.

- Always turn off the appliance and disconnect it from the power socket if you will not be using it and if you will be leaving it without supervision, before assembly, disassembly, cleaning or moving it. Always wait until rotating parts come to a complete stop before disassembly.
- Clean it according to the instructions in chapter Cleaning and maintenance.
- Do not submerge the drive unit of the appliance in water or any other liquid, or wash it under running water.
- Ensure that the power plug contacts do not come into contact with water or moisture.
- Do not place heavy items on the power cord. Make sure that the power cord does not hang over the edge of a table or that it is not touching a hot surface.
- Disconnect the power cord from the power socket by pulling on the plug, never pulling on the cord. Otherwise, this could damage the power cord or the socket.
- If the power cord is damaged, have it replaced at a professional service centre. It is forbidden to use the appliance if it has a damaged power cord.
- Do not use the appliance when it is not functioning properly or showing signs of damage.
- To avoid the danger of injury by electrical shock, do not repair the appliance yourself or make any adjustments to it. Have all repairs or adjustments performed at an authorised service centre. By tampering with the appliance, you risk voiding your legal rights arising from unsatisfactory performance or quality warranty.

A



B**1****2****C****1****2****3****4**

- Prior to using this appliance, please read the user's manual thoroughly, even if you already have experience in using similar appliances. Only use the appliance in the manner described in this user's manual. Keep this user's manual in a safe place where it can be easily retrieved for future use.
- We recommend saving the original cardboard box, packaging material, purchase receipt and responsibility statement of the vendor or warranty card for at least the duration of the legal liability for unsatisfactory performance or quality. In the event of transportation, we recommend that you pack the appliance in the original box from the manufacturer.

DESCRIPTION OF THE APPLIANCE

- | | |
|--|---|
| A1 Button for releasing the extension of the inner part of the pusher | A8 Blade for cutting spirals, cutting thickness 3 mm |
| A2 Inner part of the pusher | A9 Insertion hole for the blade holder |
| A3 Pusher outer case cover | A10 Jug lid |
| A4 Pusher outer case | A11 1.7-litre transparent jug |
| A5 Lid with feed tube | A12 Drive unit |
| A6 Blade holder with a peripheral cog wheel | A13 0/I switch (off/on) |
| A7 Blade for cutting spaghetti strips measuring 3 × 3 mm | A14 Anti-slip feet |

BEFORE FIRST USE

1. Take the appliance and its accessories out of the packaging materials.
2. Thoroughly wash all parts that are intended to come into contact with food using warm water and a neutral kitchen detergent. Then rinse under clean water and allow them to dry naturally or dry them using a wiping cloth. Do not submerge the drive unit **A12** in water or rinse it under running water.



Attention:

Be especially careful when cleaning the blades **A7** and **A8** to avoid injury on the sharp edges.

ASSEMBLING AND DISASSEMBLING THE APPLIANCE

- Before you start assembling or disassembling the appliance, check that it is turned off and disconnected from the power socket.
- Place the drive unit **A12** on an even, dry and stable surface. Place the jug **A11** under the insertion hole **A9** so that the handle points outwards and so that it is properly seated in its place (see fig. **C1**). Otherwise, the appliance will not start when turned on. The lid **A10** serves to cover the jug **A11** when it is not located in the drive unit **A12**, for short term food storage.
- Insert the blade **A7** or **A8** from above into the holder **A6** and push down the blade edges to that the blade fits in along the entire perimeter of the holder **A6** (see fig. **B1**).



Attention:

When inserting blade **A7** or **A8** into the holder **A6** take care not to injure yourself on its sharp edges.

- Insert the assembled holder with the blade from above into the insertion hole **A9** ensuring that the peripheral cog wheel on the holder **A6** slides into the cog wheel that is a part of the drive unit **A12** (see fig. **C2**). On to the drive unit **A12** place the lid with the feed tube **A5** so that the arrow symbol marked on the lid **A5** is aligned with the open padlock symbol marked on the drive unit **A12** (see fig. **C3**). Turn the lid **A5** clockwise all the way to secure it in position. The arrow symbol marked on the lid **A5** is now aligned with the closed padlock symbol on the drive unit **A12**. Unless the lid **A5** is properly attached, the appliance will not start when turned on.

- Into the outer case **A4** insert the inner part of the pusher **A2**, and to connect these two parts press the cover **A3** towards the outer case **A4** while at the same time turning it anticlockwise all the way. Insert the pusher assembled in this way into the feed tube **A5** (see fig. **C4**). Button **A1** serves to release the extension of the inner part of the pusher **A2**. When button **A1** is pushed, the inner part of the pusher **A2** will extend out upwards. This will release the remaining foodstuffs from the bottom part of the pusher when the appliance is used. Lock the extension in place by pushing the inner part of the pusher **A2** down into the outer case **A4** until it is secured in place by both latches on the inner part of the pusher **A2** in the cover **A3**.
- Disassemble the appliance in the reverse sequence. To remove the blade **A7** or **A8** from the holder **A6**, it is first necessary to push down the latches of the blade **A7** or **A8** from underneath (see fig. **B2**). This will release the blades and it is then possible to remove them.

OPERATING THE APPLIANCE

1. This appliance is suitable for processing harder types of fruits and vegetables such as, for example, carrot, apple, celery, zucchini, cabbage, beetroot, pumpkin, cucumber, potatoes, sweet potato, etc. in the raw form. It is not particularly suitable for processing soft types of fruits and vegetables.
2. Thoroughly wash all the fruit and vegetables. Certain types may need to be cut up to pass through the hole of the feed tube **A5**. This means that the diameter of the fruit or vegetable should not be greater than 75 mm and the length should be no greater than 175 mm. Kernels and stones also need to be removed from certain types of fruit and vegetables.



Attention:

Never attempt to use this appliance to process hard stones contained in, for example, mangoes, etc.

3. Make sure that the appliance is properly assembled and located on an even, dry and stable surface. Connect the power plug to a power socket and set the switch **A13** to position I (on).
4. Start gradually inserting the fruit or vegetables into the hole of the feed tube **A5** and push them through the feed tube **A5** with the properly assembled pusher. To release any remaining foodstuffs from the bottom part of the pusher, use button **A1** as described in chapter Assembling and disassembling the appliance.



Attention:

Do not use fingers or other items to push food in.

The maximum continuous operating time is 1 minute. Before turning it on again, allow the appliance to cool down for at least 5 minutes.

5. In the event that the jug **A11** fills up during operation, turn off the appliance, disconnect it from the power socket and make sure that the rotating parts have stopped. Empty the jug **A11** and put it back in its place. Then you can use the appliance again.
6. When you have finished using it, set the switch **A13** to position 0 (off), disconnect the appliance from the power socket and clean it out according to the instructions contained in the chapter Cleaning and maintenance.

QUICK GUIDE TO PROCESSING FRUIT AND VEGETABLES

Type of fruit or vegetable	Type of blade	Maximum amount per batch	Approximate operating time
Carrot	A7 or A8	500 g	30 s
Potatoes	A7 or A8	500 g	30 s
Cucumber	A7 or A8	500 g	30 s
Cabbage	A7	500 g	30 s
Zucchini	A7 or A8	500 g	30 s

CLEANING AND MAINTENANCE

- Clean out the appliance after every use. Before cleaning it, make sure that the appliance is turned off and disconnected from the power socket and that the rotating parts have stopped.
- Disassemble the appliance into its individual parts. Wash the removable parts that come into contact with food under warm running water using kitchen detergent. Then rinse them under clean running water and wipe them dry or allow them to dry naturally. The jug **A11**, lid **A10** and the outer pusher case **A4** may be washed in a dishwasher. Other parts are not intended for washing in a dishwasher.
- Certain types of food such as carrot, may cause discolouration of plastic parts of the appliance. If this occurs, coat these parts with cooking oil and then clean them out in the normal way. Discolouration does not have any effect on the functionality of the appliance.



Attention:

Be especially careful when cleaning the blades **A7** or **A8** to avoid injury on the sharp edges.

- For cleaning the drive unit **A12**, use a cloth lightly dipped in a weak solution of water and neutral kitchen detergent. Then thoroughly wipe everything with a clean dampened cloth and wipe dry. Never submerge the drive unit **A12** or its power cord in water or any other liquids.
- For cleaning, do not use solvents, abrasive cleaning products, etc. Otherwise the surface may be damaged.

TECHNICAL SPECIFICATIONS

Rated voltage range	220–240 V
Rated frequency	50/60 Hz
Rated power input	90 W
Safety class (for electric shock protection)	II
Noise level	80 dB(A)

The declared noise emission level of the appliance is 80 dB(A), which represents a level A of acoustic power with respect to a reference acoustic power of 1 pW.

Explanation of technical terminology

Safety class for electrical shock protection:

Class II – electrical shock protection is provided by double or heavy-duty insulation.

Changes to text and technical parameters are reserved.

INSTRUCTIONS AND INFORMATION REGARDING THE DISPOSAL OF USED PACKAGING MATERIALS

Dispose of used packaging material at a site designated for waste in your municipality.

DISPOSAL OF USED ELECTRICAL AND ELECTRONIC EQUIPMENT



This symbol on products or original documents means that used electric or electronic products must not be added to ordinary municipal waste. For proper disposal, renewal and recycling hand over these appliances to determined collection points. Alternatively, in some European Union states or other European countries you may return your appliances to the local retailer when buying an equivalent new appliance.

Correct disposal of this product helps save valuable natural resources and prevents potential negative effects on the environment and human health, which could result from improper waste disposal. Ask your local authorities or collection facility for more details.

In accordance with national regulations penalties may be imposed for the incorrect disposal of this type of waste.

For business entities in European Union states

If you want to dispose of electric or electronic appliances, ask your retailer or supplier for the necessary information.

Disposal in other countries outside the European Union.

This symbol is valid in the European Union. If you wish to dispose of this product, request the necessary information about the correct disposal method from the local council or from your retailer.



This product meets all the basic requirements of EU directives related to it.