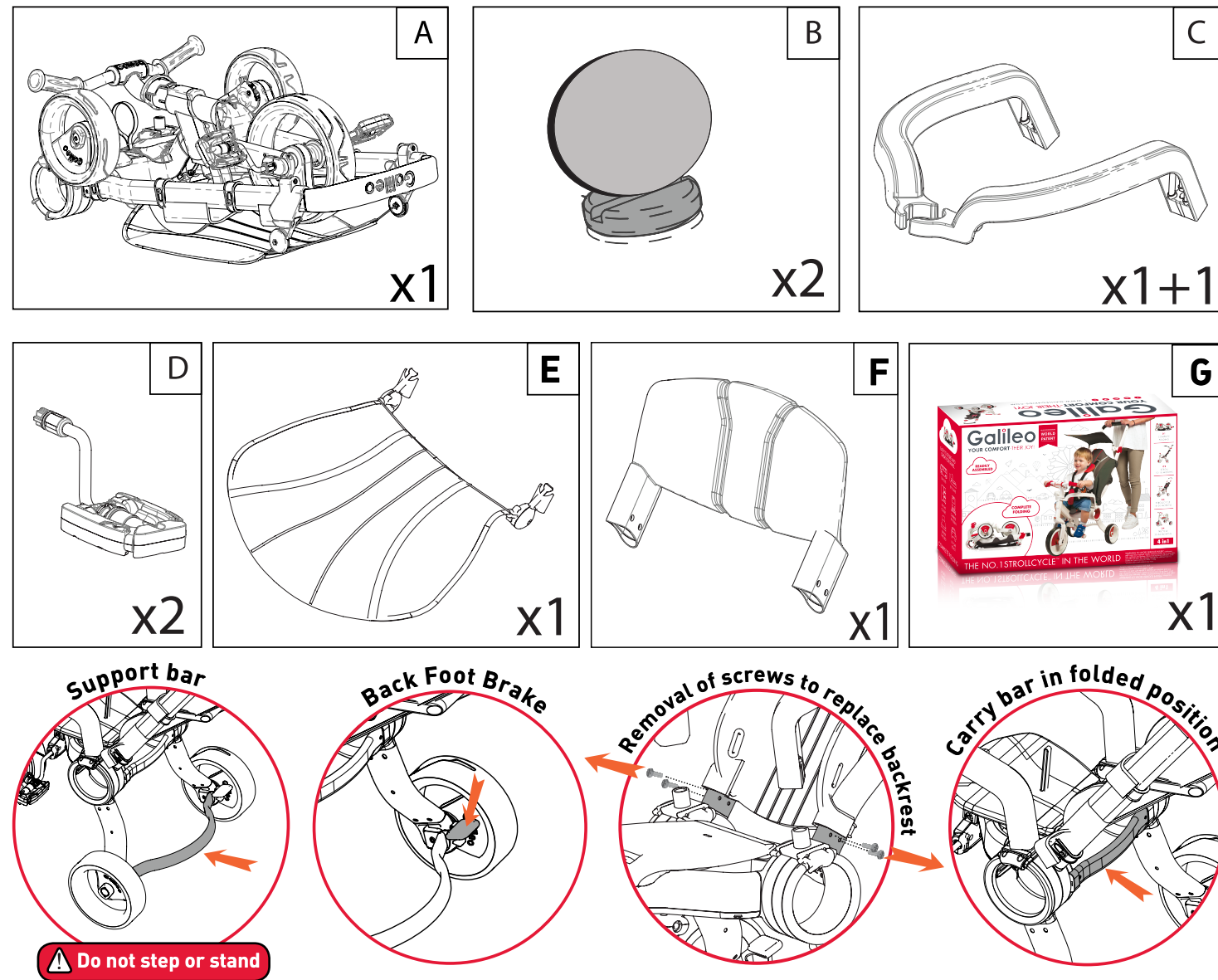


Content:



Galileo Strollcycle-G1001

FEATURES INSTRUCTIONS



Cleaning and Maintenance:

- 1 Periodically check the Strollcycle for any damage due to wear and tear.
- 2 No attempts should be made to repair this product or make any modifications. If assistance is needed, contact Galileo 4 Kids Customer Service. service@galileo4kids.com
- 3 Clean using cold water, soap and a damp cloth. Do not use any other cleaning products or coarse materials.
- 4 In order to dispose of the Strollcycle after years of use, disassemble and discard in a manner which is not hazardous.

- 1 DO NOT STEP ON THE SUPPORT BAR!
- 1 TRICYCLE MODE – KEEP THE SAFETY RING ON FOR KIDS SAFETY!
- 1 IN TRICYCLE MODE RECOMMENDED TO USE HELMET!

WWW.GALILEO4KIDS.COM

Galileo gross weight 6.5KG
Folded size: 75x23x49CM
Open size: 85x49x83CM
Max weight for use: 25KG

COMPLETE FOLDING



EASY TO STORE AND GREAT FOR TRAVEL



ON BUS



BY PLANE



IN THE CLOSET



CARRIED IN TRAIN



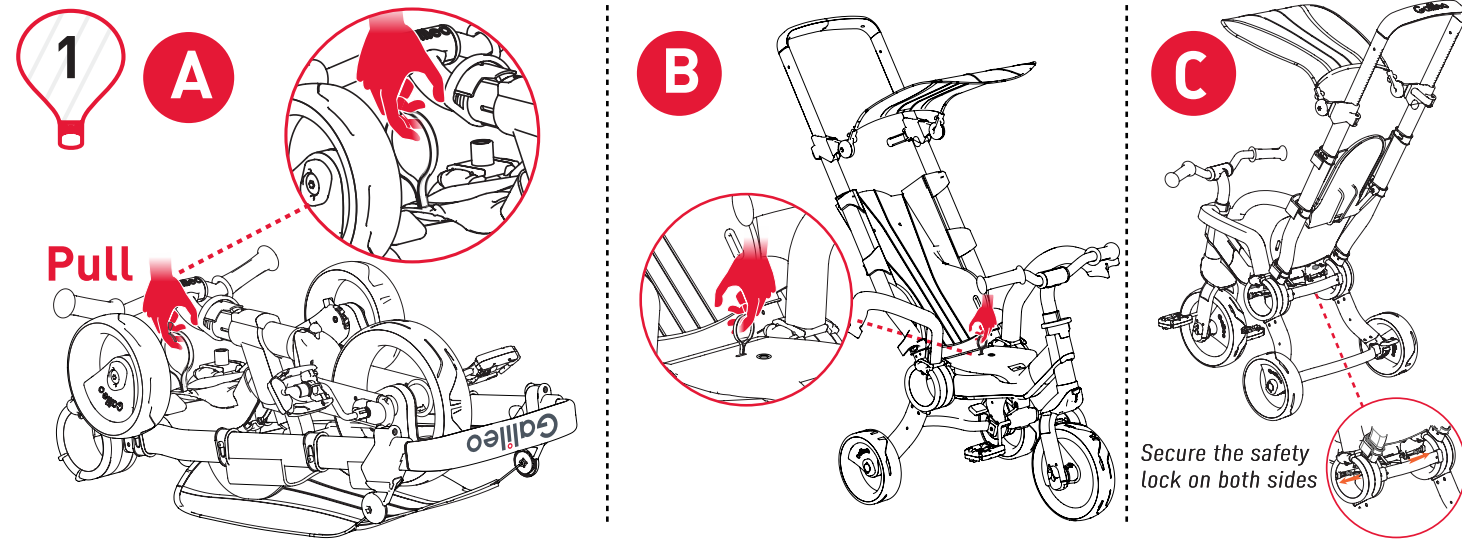
UNDER THE BED



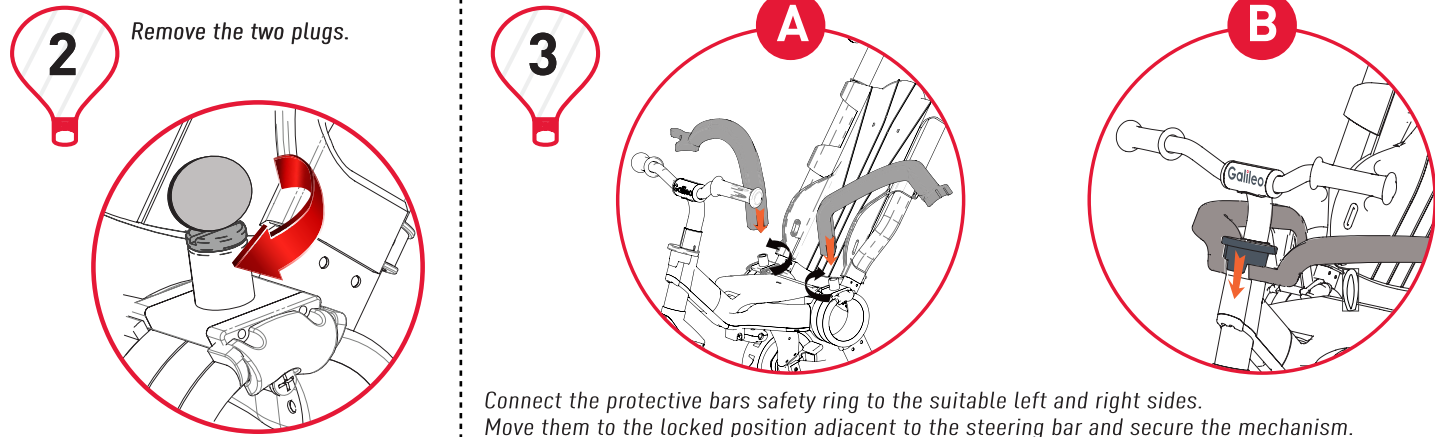
IN CAR BOOT

COMPLETE FOLDING

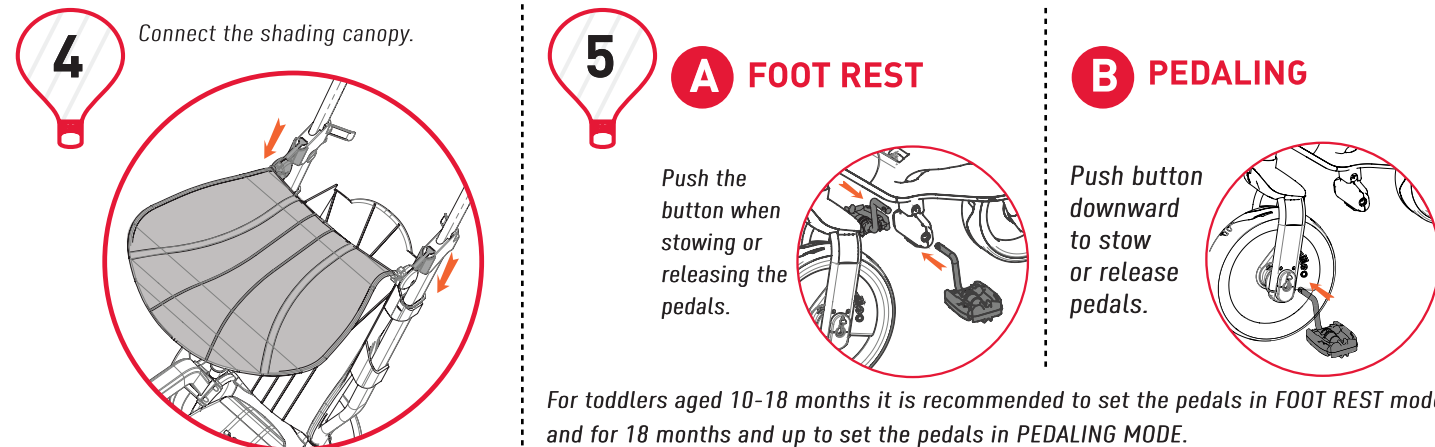
Instructions for Folded Strollcycle:



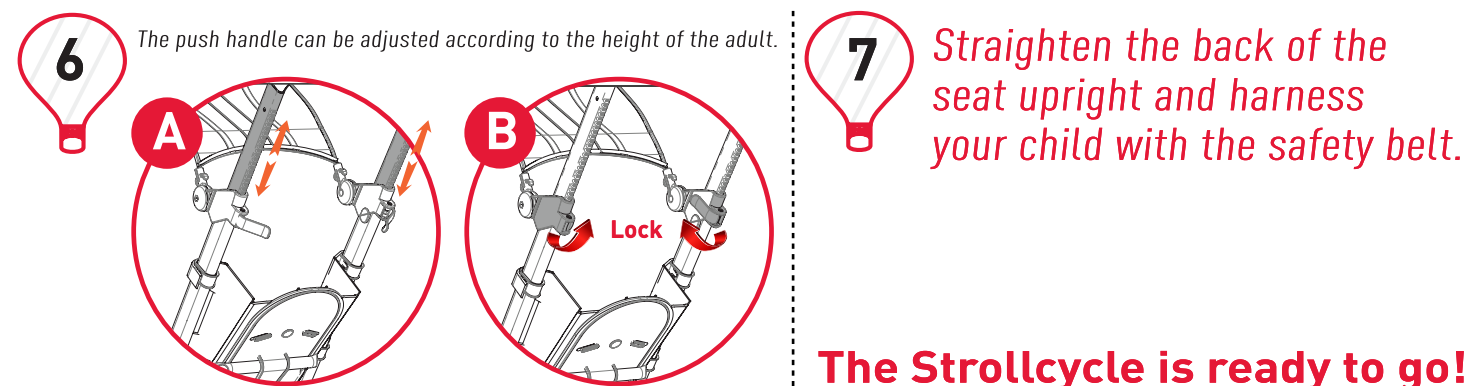
Remove Strollcycle from the packaging and clear away the plastic wrapping. Place on a flat surface free from hazards, and extend your arm to the strap located on the riding seat. In unison place your second hand on the steering bar and pull on the strap. While the Strollcycle is opening, raise the steering bar and the push handle in an upward direction until the vehicle is stabilized and a click is heard, secure the safety lock on both sides



Connect the protective bars safety ring to the suitable left and right sides. Move them to the locked position adjacent to the steering bar and secure the mechanism.

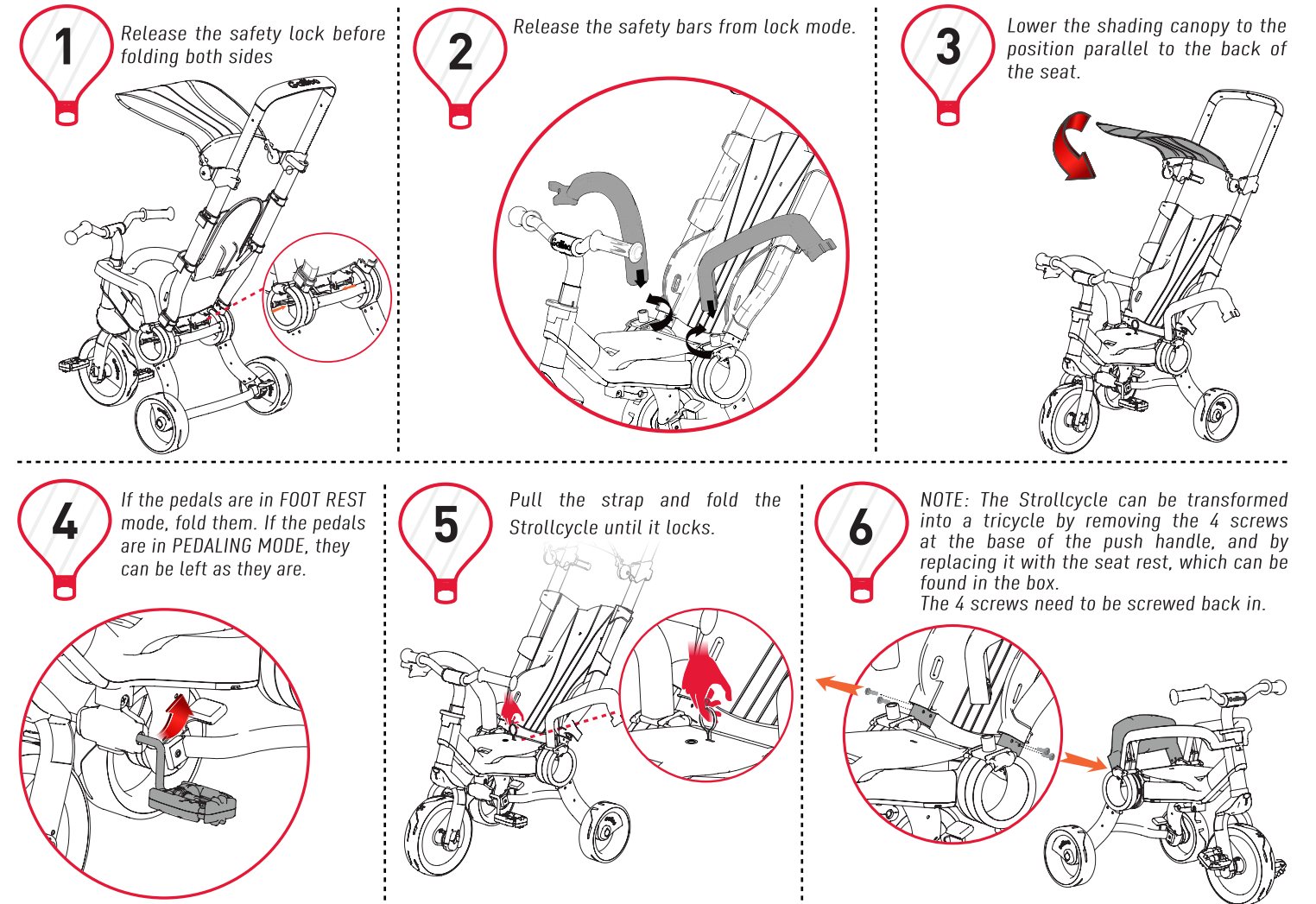


For toddlers aged 10-18 months it is recommended to set the pedals in FOOT REST mode and for 18 months and up to set the pedals in PEDALING MODE.



The Strollcycle is ready to go!

Folding the Strollcycle:

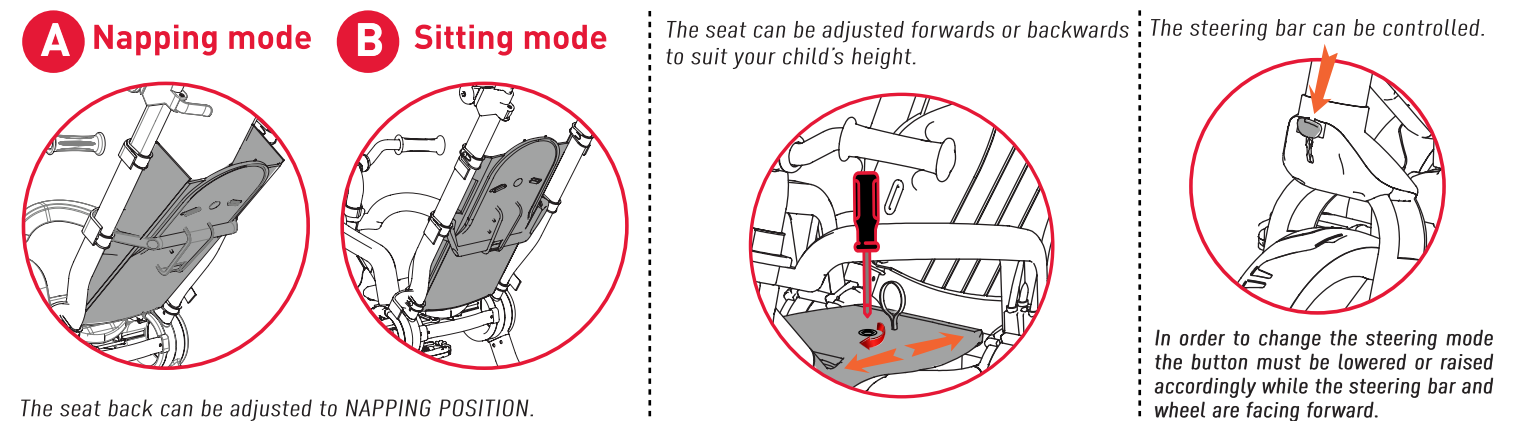


If the pedals are in FOOT REST mode, fold them. If the pedals are in PEDALING MODE, they can be left as they are.

Pull the strap and fold the Strollcycle until it locks.

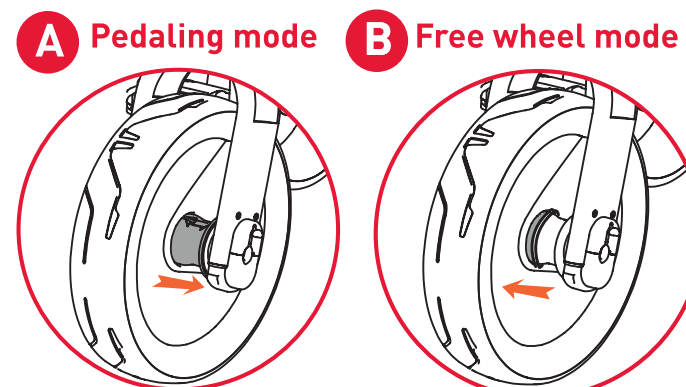
NOTE: The Strollcycle can be transformed into a tricycle by removing the 4 screws at the base of the push handle, and by replacing it with the seat rest, which can be found in the box. The 4 screws need to be screwed back in.

Safety and Convenience Features:



The seat back can be adjusted to NAPPING POSITION.

In order to change the steering mode the button must be lowered or raised accordingly while the steering bar and wheel are facing forward.



The pedals modes are interchangeable between FREE WHEEL and PEDALING MODES

- 1 The protective bars provide maximal access when opened for getting on and off the Strollcycle.
- 2 Adjustable push bar.
- 3 The seat back can be adjusted to NAPPING POSITION and can be removed for cleaning.
- 4 The steering bar can be controlled.
- 5 Can be controlled freely or by front wheel pedaling.
- 6 The pedals modes are interchangeable between FOOT REST and PEDALING MODES.
- 7 The pedals can be folded to maximize your toddler's safety.
- 8 Carry bar for lifting the Strollcycle.
- 9 The seat can be adjusted forwards or backwards to suit your child's height.
- 10 Shading canopy from the sun SPF 50.
- 11 Back Foot Brake.
- 12 Safety belt.
- 13 Curved seat on the sides of the back rest to prevent your child from sliding off the seat.
- 14 The seat's padding is designed for comfort and can be removed for cleaning.